

# Annual Statistical Report

REPORTING ON 2022 DATA



**INTERNATIONAL**  
MISSION BOARD

## DEAR PARTNERS IN THE MISSION,

Working together, Southern Baptists are making an incredible impact for God's Kingdom in North America and among the nations! For 178 years, we have remained united in our efforts to address the world's greatest problem — lostness — with God's solution, which is the gospel. Following the biblical model, we prioritize a missionary presence in taking the gospel to those who haven't heard.

God has blessed the work of Southern Baptists' missionaries and our national partners. Over the course of our history, Southern Baptists have been instrumental in the formation of more than 140 Baptist conventions and unions overseas, many of which have resulted from significant movements of God across countries and continents. The first IMB missionary family arrived in Nigeria in 1849 and proclaimed the gospel two years before anyone believed. Today there are more than 10,000 Baptist churches in Nigeria and, through the Nigerian Baptist Convention, they send hundreds of their own cross-cultural missionaries!


But nowhere is a movement of God more apparent currently than in South Asia. Southern Baptist missionaries first arrived in South Asia in the 1950s. Since then, the remarkable spread of the gospel has moved in concert with explosive population growth. The sustained presence of Southern Baptist missionaries has given birth to more than 800 close partnerships with indigenous church planters and church

networks within South Asia. With thousands of new churches resulting annually, one missionary told a national believer, "People will one day come to find out what is happening here."

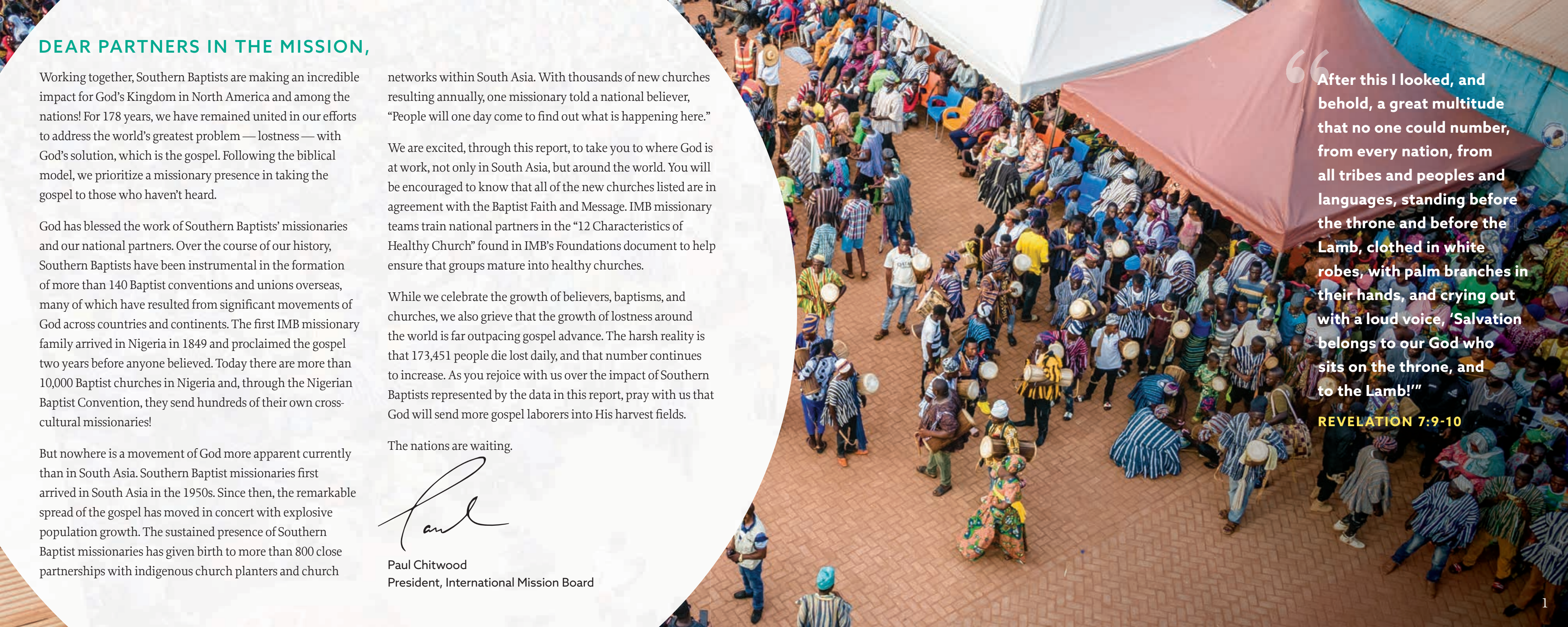
We are excited, through this report, to take you to where God is at work, not only in South Asia, but around the world. You will be encouraged to know that all of the new churches listed are in agreement with the Baptist Faith and Message. IMB missionary teams train national partners in the "12 Characteristics of Healthy Church" found in IMB's Foundations document to help ensure that groups mature into healthy churches.

While we celebrate the growth of believers, baptisms, and churches, we also grieve that the growth of lostness around the world is far outpacing gospel advance. The harsh reality is that 173,451 people die lost daily, and that number continues to increase. As you rejoice with us over the impact of Southern Baptists represented by the data in this report, pray with us that God will send more gospel laborers into His harvest fields.

The nations are waiting.



Paul Chitwood  
President, International Mission Board



“After this I looked, and behold, a great multitude that no one could number, from every nation, from all tribes and peoples and languages, standing before the throne and before the Lamb, clothed in white robes, with palm branches in their hands, and crying out with a loud voice, ‘Salvation belongs to our God who sits on the throne, and to the Lamb!’”

**REVELATION 7:9-10**

# Strategic Objectives

1

SEND AN ADDITIONAL 500 MISSIONARIES TO THE NATIONS

2

MOBILIZE 500 GLOBAL MISSIONARY PARTNERS ON IMB TEAMS

3

ENGAGE 75 GLOBAL CITIES WITH COMPREHENSIVE STRATEGIES

4

MOBILIZE 75% OF SOUTHERN BAPTIST CHURCHES TO PRAYERFULLY AND FINANCIALLY SUPPORT THE IMB

5

INCREASE GIVING TO THE IMB BY 6% ANNUALLY

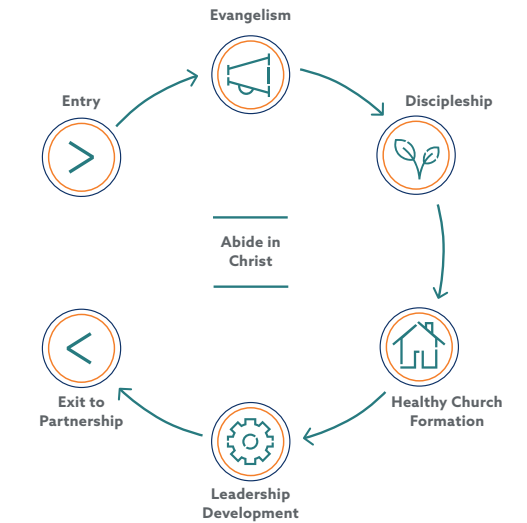
In Revelation 7:9, we see the victorious culmination to the grand narrative that transcends this earth, and we rest in the certainty that this vision will come to pass.

Since the very beginning of our cooperative efforts, Southern Baptists have sent IMB missionaries who have spent their lives in obedience to the Great Commission and in pursuit of the Great Multitude.

As we join God in His mission, we do so with these five strategic objectives in mind.



## THE MISSIONARY TASK



In light of the full testimony of Scripture, we believe the core missionary task has six components: entry, evangelism, discipleship, healthy church formation, leadership development, and exit to partnership. Because prayer is central to our strategy, it is not a separate component of the task, but rather an essential element in every part. Prayerful abiding in Christ must permeate every aspect of the missionary task.

# Globalization

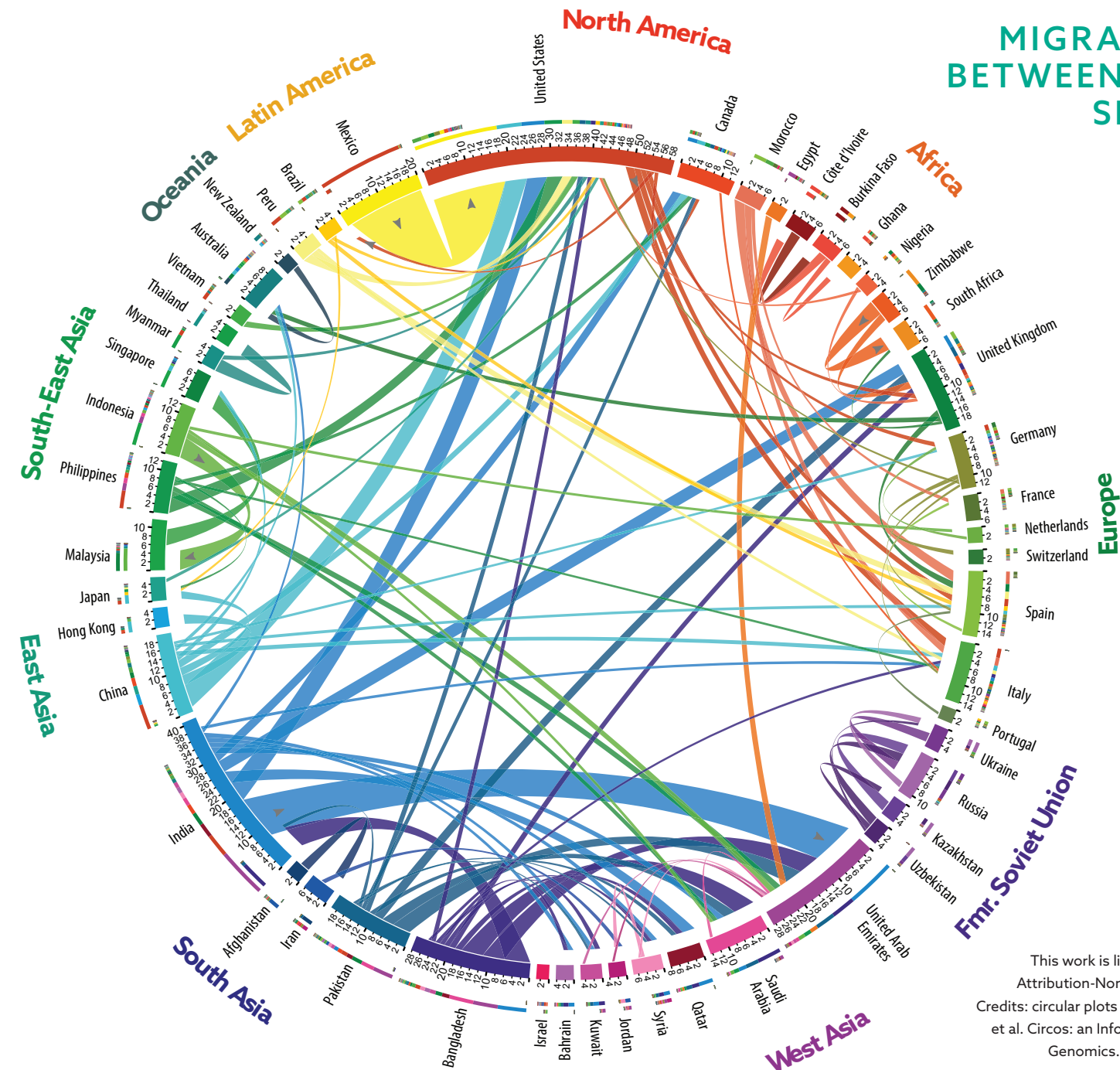
Missions is a global Church task. In recent years, the IMB noticed that the Lord was calling out large numbers of missionaries from peoples and places that were once considered mission fields. As a result, IMB launched an initiative called Globalization. In this Globalization effort, IMB works closely with our non-U.S. national partners to help them embrace their role in the Great Commission.

Globalization seeks to encourage and expand national partners' capacity to send and receive cross-cultural missionaries. Churches in some nations are strong senders with their own sending organizations. Elsewhere, national partner churches struggle to launch and sustain missionaries. With the globalization of the missionary task effort, IMB is doing more than helping launch missionaries—we are helping launch mission agencies.

Through mentoring and coaching consultancies and 1-to-2-year placements of missionaries to IMB field teams, our national partners grow their missions infrastructure, experience, and skills. These missionaries, sent from the nations to the nations, are called Global Missionary Partners (GMP). Since the beginning of the Globalization effort, IMB has helped send 78 Global Missionary Partners from 18 countries to 24 countries to serve on IMB teams. Please be in prayer for IMB's strategic objective goal to mobilize 500 Global Missionary Partners on IMB teams.

The SBC will never fulfill the Great Commission alone. Jesus said, "pray earnestly to the Lord of the harvest to send out laborers into his harvest" (Matt 9:38). The Lord is calling today's missionaries out of yesterday's mission fields—missionaries who can access the lost in lands where U.S. passport holders cannot go.

## MIGRATION FLOWS BETWEEN THE TOP 50 SENDING AND RECEIVING COUNTRIES 2005-2010



The circular plot shows the estimates of directional flows between the **50 countries** that sent and/or received at least 0.5% of the world's migrants in 2005-10.

Tick marks indicate gross migration (in+out) in 100,000's.

This work is licensed under a Creative Commons Attribution-NonCommercial 3.0 Unported License. Credits: circular plots created with Circo (Krzyszowski, M. et al. Circo: an Information Aesthetic for Comparative Genomics. Genome Res, 2009, 19:1639-1645)

# Global HIGHLIGHTS

**67**  
new people groups  
and places engaged

**728,589**  
heard the gospel

**178,177**  
new believers

**102,417**  
baptisms

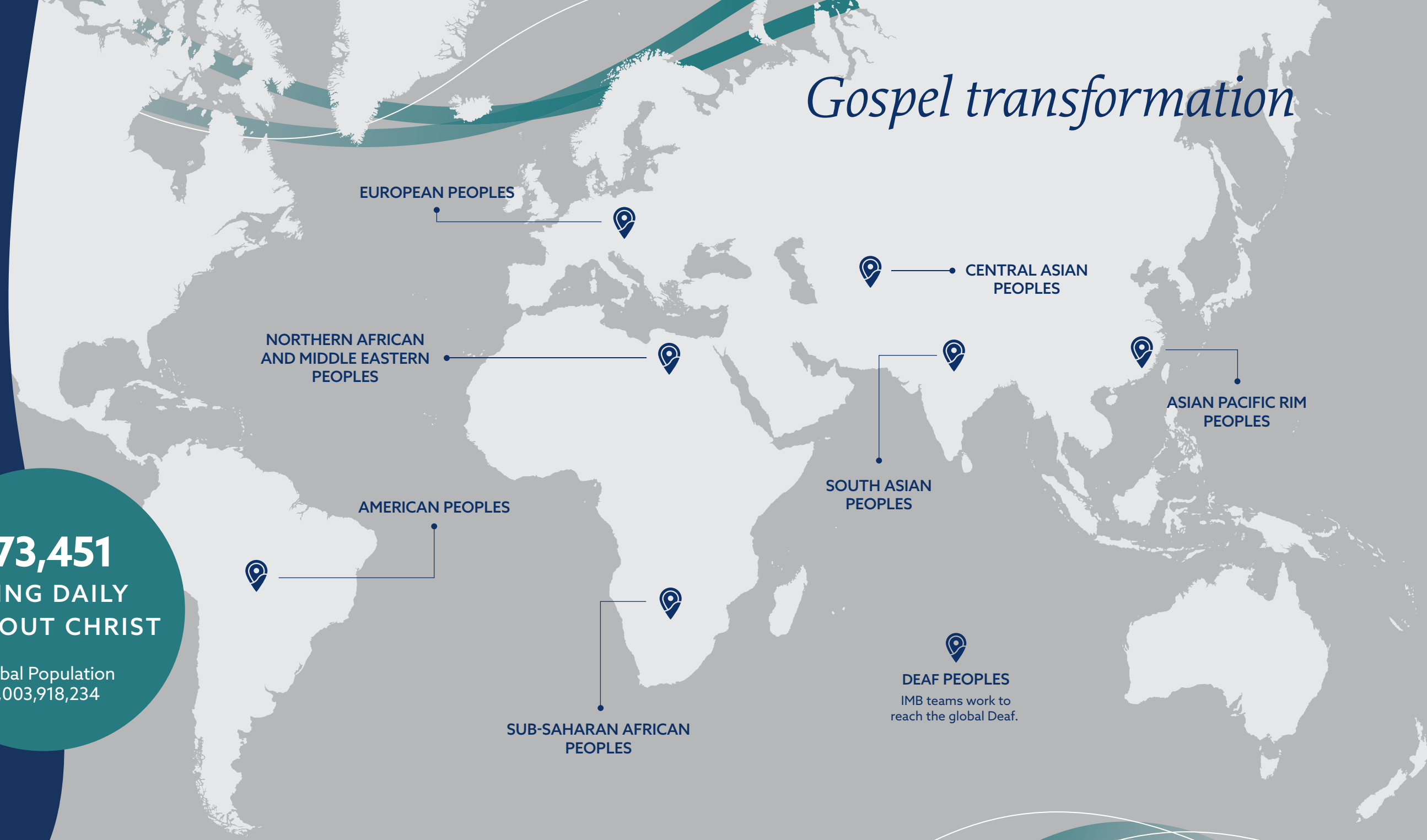
**21,231**  
new churches

**146,026**  
people received  
leadership  
training

**173,451**  
DYING DAILY  
WITHOUT CHRIST

Global Population  
8,003,918,234

# Gospel transformation



EUROPEAN PEOPLES

CENTRAL ASIAN PEOPLES

ASIAN PACIFIC RIM PEOPLES

SOUTH ASIAN PEOPLES

DEAF PEOPLES  
IMB teams work to reach the global Deaf.

SUB-SAHARAN AFRICAN PEOPLES

AMERICAN PEOPLES

NORTHERN AFRICAN AND MIDDLE EASTERN PEOPLES

## CONTENTS

WELCOME..... 1-5

GLOBAL..... 6-9

AMERICAN PEOPLES..... 10-15

ASIAN PACIFIC RIM PEOPLES... 16-21

CENTRAL ASIAN PEOPLES.... 22-27

DEAF PEOPLES..... 28-33

EUROPEAN PEOPLES..... 34-39

NORTHERN AFRICAN AND MIDDLE EASTERN PEOPLES... 40-45

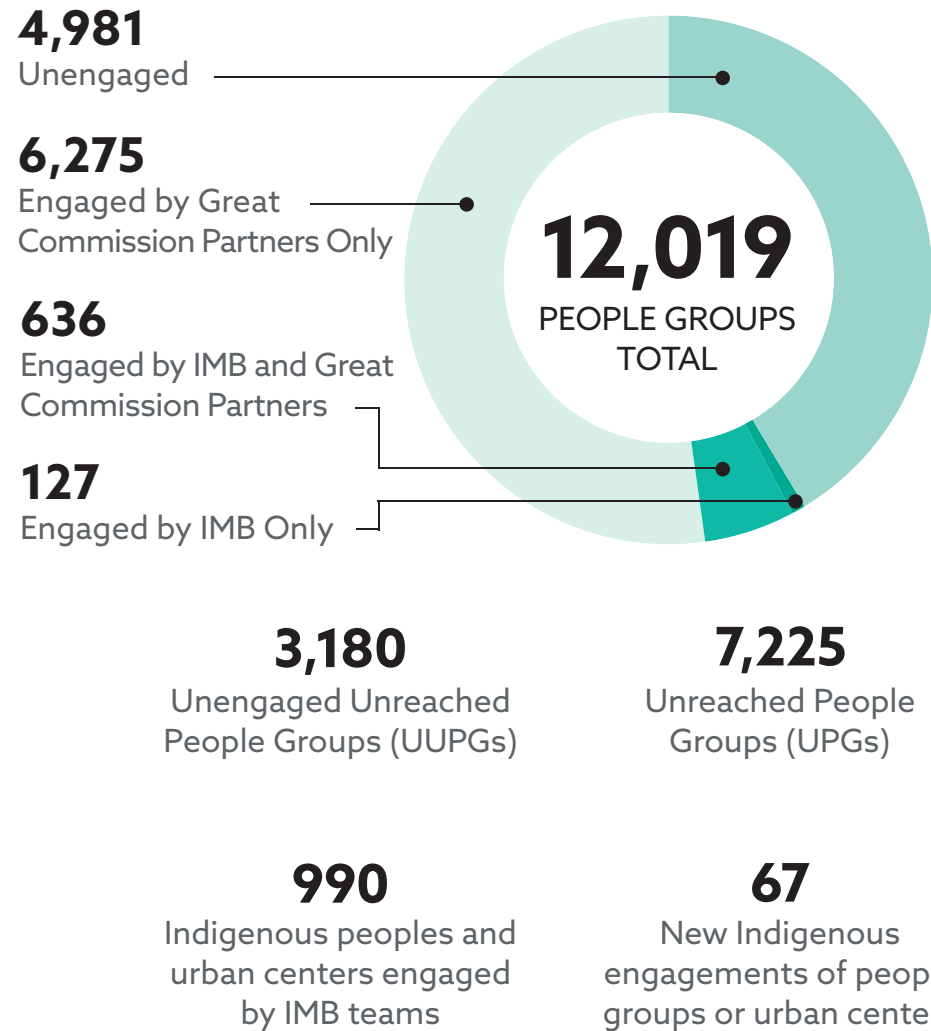
SOUTH ASIAN PEOPLES..... 46-51

SUB-SAHARAN AFRICAN PEOPLES..... 52-57

UNDERSTANDING THIS REPORT 58-59

# Global

## ENTRY



## EVANGELISM

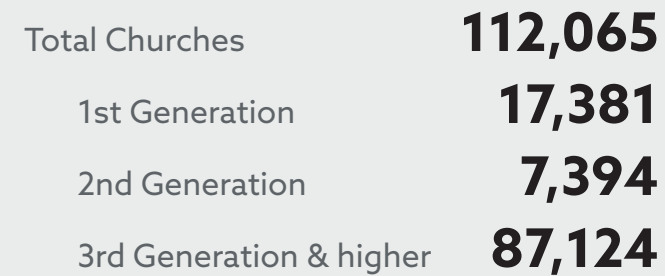
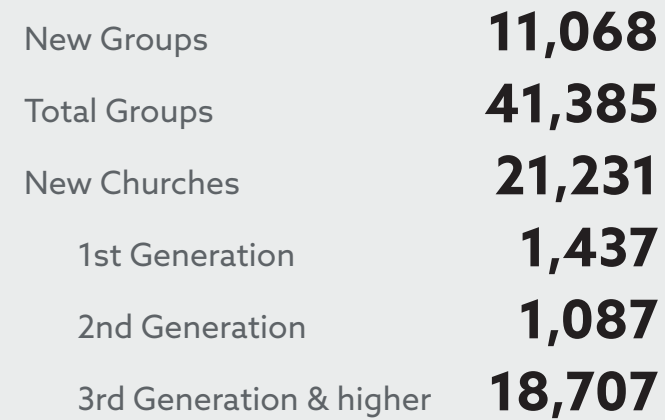


## DISCIPLESHIP

**345,692**  
Ongoing Bible Study participants

**132,823**  
Being personally mentored

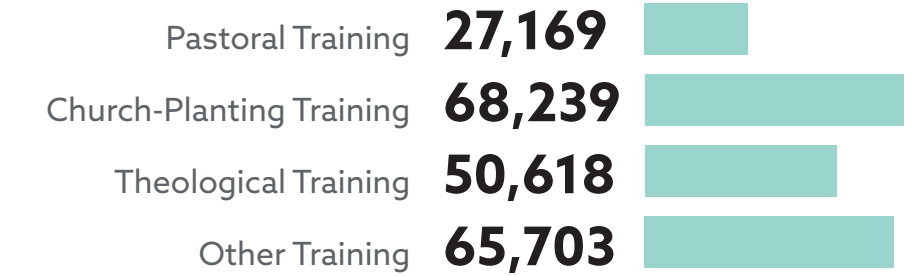
## HEALTHY CHURCH FORMATION



Baptized Believers Meeting **680,280**

# Summaries

## LEADERSHIP DEVELOPMENT



## EXIT TO PARTNERSHIP

IMB engagement decreases as local ownership of the missionary task increases.

**75**  
Total global missionary partners sent from one nation to another to join IMB teams  
(Total sent from 2020 until December 31, 2022)

**84**  
Indigenous people groups are engaging other people groups inside their own country

**541**  
Indigenous people groups have self-sustaining ownership in the missionary task

**38**  
Indigenous people groups are engaging other people groups outside their own country

# American Peoples

## FROM THE GLOBAL LEADER:

“Finally, brothers, pray for us, that the word of the Lord may speed ahead and be honored, as happened among you.”

**2 Thessalonians 3:1**

*God’s Word teaches us to pray for the spread of the gospel. It also emphasizes two accompanying characteristics that we should seek.*

*First, we are encouraged to pray that the spread of the gospel will be rapid. The truth is that the population of the world is exploding—in Latin America alone some 25,000 children are born each day. Multiplication of disciples, not just addition, is the crying need of this hour.*

*Second, we are to seek an expansion of God’s Kingdom in a way that honors Him. This points to radically transformed lives. Please pray that our missionary efforts among the American Peoples will result in both.*



# Gospel transformation



## HIGHLIGHTS

**15**  
new people groups  
and places engaged

**84,009**  
heard the gospel

**9,429**  
new believers

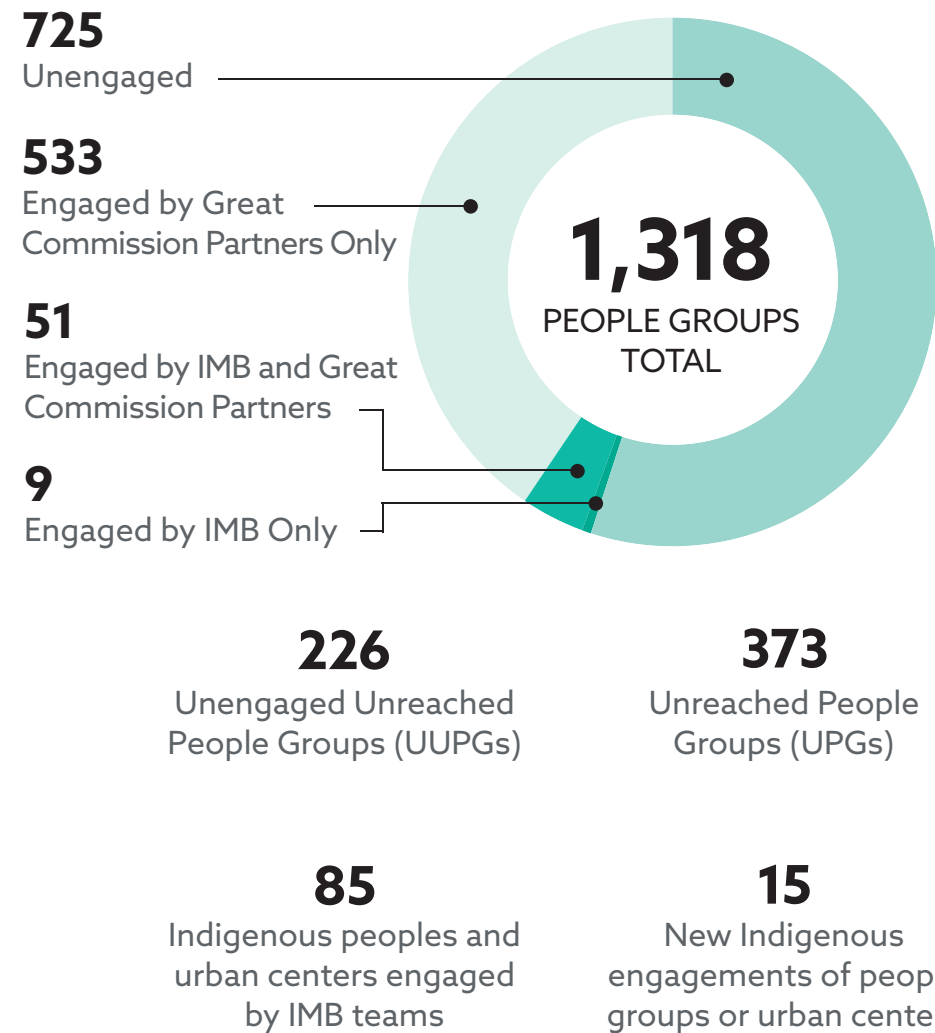
**850**  
baptisms

**24**  
new churches

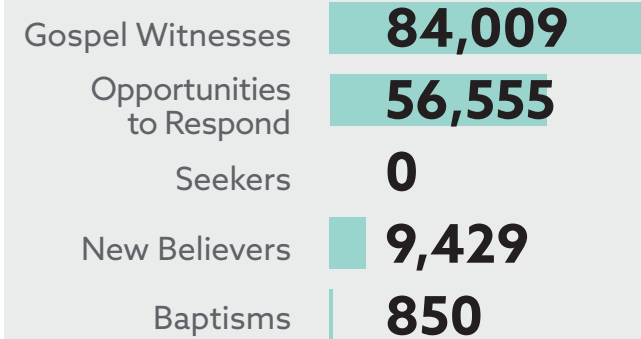
**2,448**  
people received  
leadership training

# American Peoples

## ENTRY



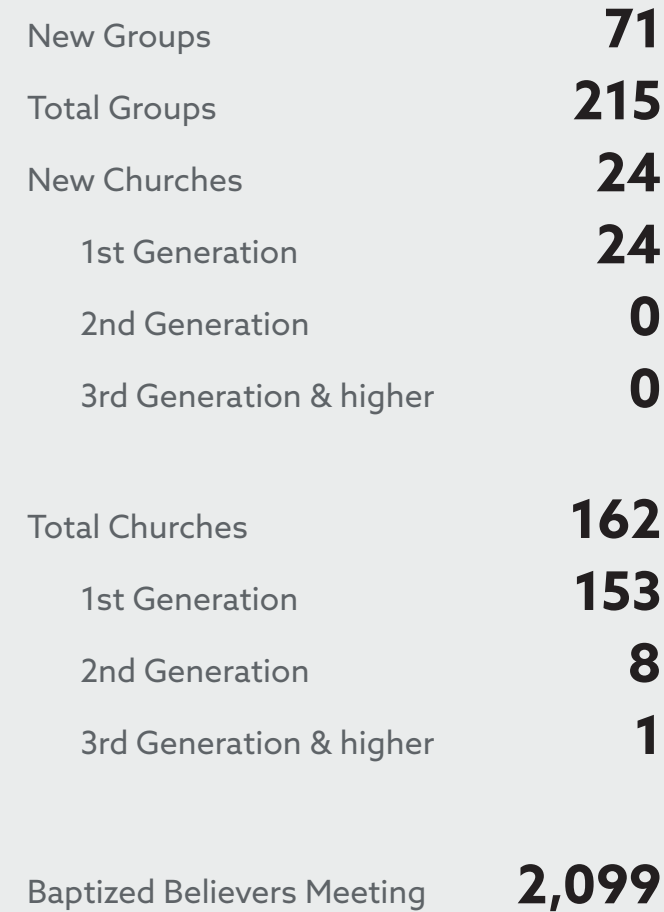
## EVANGELISM



## DISCIPLESHIP

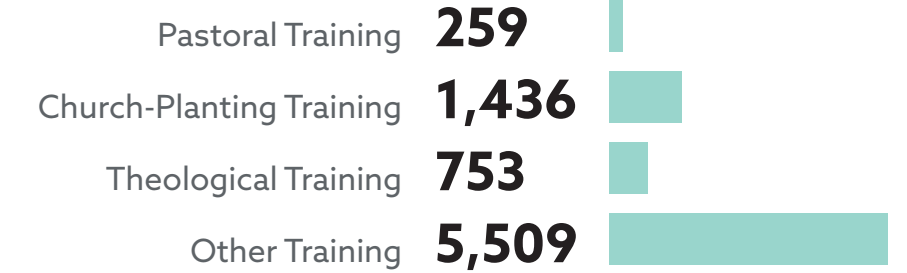


## HEALTHY CHURCH FORMATION



# Summaries

## LEADERSHIP DEVELOPMENT



## EXIT TO PARTNERSHIP

IMB engagement decreases as local ownership of the missionary task increases.





# American Peoples

## ENTRY

*In the fall of 2021, a Peruvian pastor in Lima shared his desire to plant a church in the village where he was raised. In the spring of 2022, we took our first trip and met with another pastor in a neighboring village who also wanted to join in the work. He mentioned that he provides vitamins and vaccines for farm animals to villagers in the area. Between his access with veterinary services and the Lima pastor's family connections, we have already shared the gospel in multiple homes in the community.*

## EVANGELISM

*One Sunday we were studying with our church plant, when a man whose face was bandaged stopped to listen outside the gate. He seemed deeply moved as he stood listening. We invited him inside, and he hesitantly came in and sat down. After the study and an explanation of the gospel, he told me he had been savagely beaten up the night before. His story was of great loss and rejection. He kept looking at me with his one uncovered eye and repeated, "I can't believe you invited me in, as I am, a total stranger all bandaged up. I feel such a sense of peace for the first time in such a long time now."*

## DISCIPLESHIP

*A group of ladies meets weekly to pray for their community, one characterized by drug abuse and violence. They asked me if I would come and teach them about the Bible. While technically literate, many of these women are oral learners. Recently I was out of town and unable to meet with them. I asked Jananiene, a member of the community, if she could tell the Bible story that week. At her request, I sent her an audio recording on WhatsApp of the Bible story in addition to the text. She led the group. The next day I called to see how it went. Her reply, "I think it went okay; two ladies accepted Christ. We just kept telling the story over and over until we all remembered it, and then it just made sense."*

## HEALTHY CHURCH FORMATION

*For years, our team has been working among the Mixtec people of southern Mexico. A few months ago, four Mixtec courageously professed their faith in Christ. Recently, we baptized fifteen additional believers from among this people group. This excited group of new believers self-identifies as a church. The first thing on their agenda is worshipping the Lord in their own language. This new church has already begun translating songs into Mixtec, so as the church grows, they can worship Him in their heart language.*

# From Your Missionaries

## LEADERSHIP DEVELOPMENT

*João was raised in a family plagued by addiction and violence. By God's grace, he came to faith in Christ and sensed God's call to teach and preach Scripture. There was a problem: João had only a basic education. He could not attend a traditional seminary. Yet, his community desperately needed local leaders capable of preaching and teaching Scripture to serve new churches. I was asked to teach him how to preach biblically without having a formal theological education. For three months, we studied how to study Scripture. Finally, we studied and practiced a simple method of biblical preaching. João preached his first message. The church was blessed, the Scriptures were accurately explained, and God was glorified.*

## EXIT TO PARTNERSHIP

*For over 25 years, IMB missionaries in the Americas and Florida Baptists have labored together alongside Baptists in Cuba. Each year Florida Baptists send over 50 groups to Cuba to partner with Cuban Baptists to fulfill their vision of winning Cuba for Christ through the planting of healthy churches within walking distance of every Cuban. As the vision is fulfilled, this partnership has dawned into a new day of sending God-called Cuban missionaries to work with UPGs across the globe.*



**19,865**  
**DYING DAILY**  
**WITHOUT CHRIST**

Population  
927,347,137

Approximate numbers calculated using IMB global population and evangelical Christian estimates, excluding the United States.

# Asian Pacific Rim Peoples

## FROM THE GLOBAL LEADER:

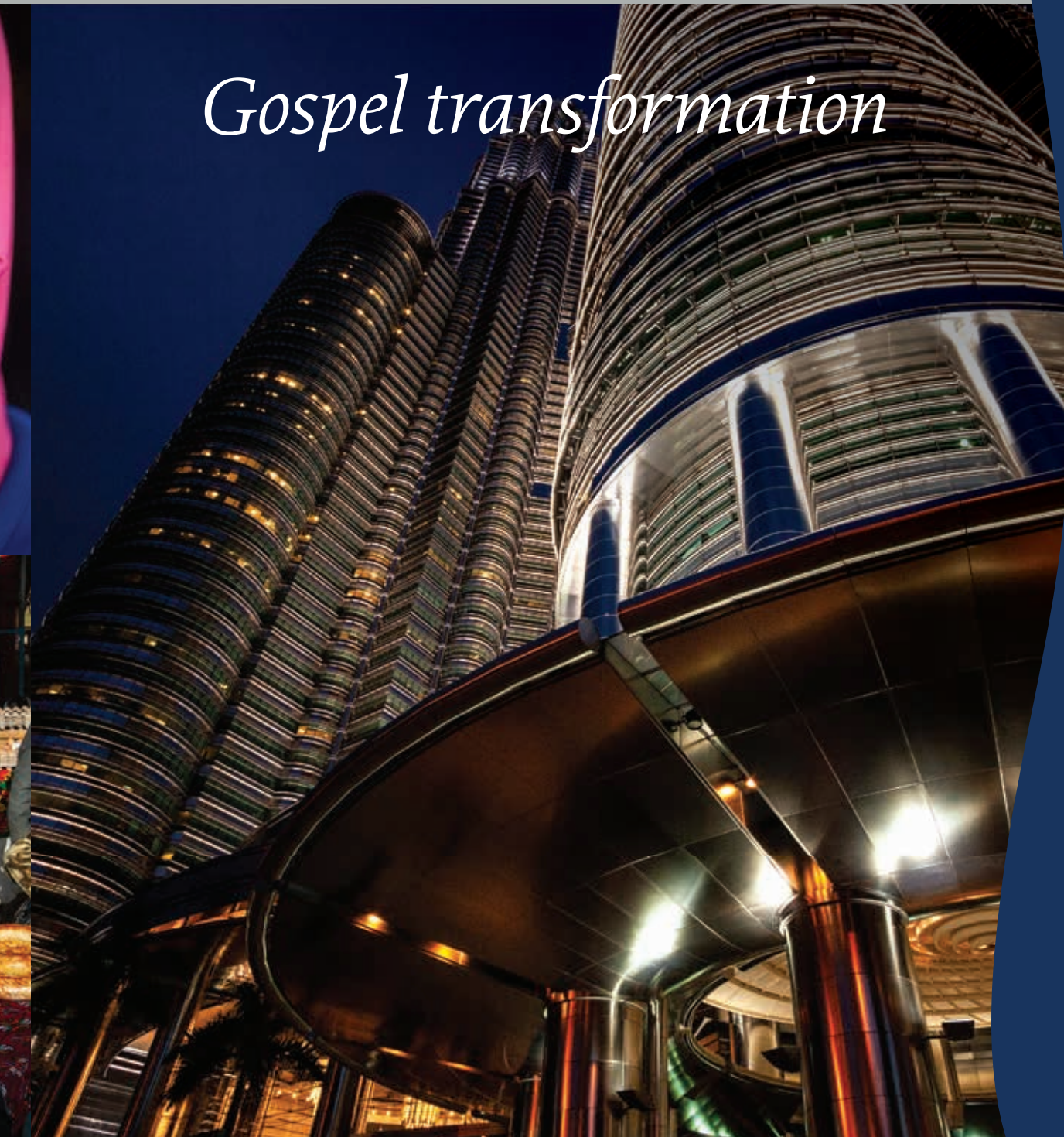
“When he saw the crowds, he had compassion for them, because they were harassed and helpless, like sheep without a shepherd. Then he said to his disciples, ‘The harvest is plentiful, but the laborers are few; therefore pray earnestly to the Lord of the harvest to send out laborers into his harvest.’”

**Matthew 9:36-38**

*Numbers are insufficient. As beneficial and needed as they are in demonstrating quantitatively both opportunities and remaining challenges that still exist, they don't adequately capture the gravity and weight of pain you feel when looking into the eyes of a young Buddhist or staunch Muslim whose eternity apart from Christ is sealed should the gospel be rejected, nor do they capture the joy and elation of seeing them repent and be radically transformed should it be accepted. Every number has a face, a name and a story that should give way to agonizing prayers for the Lord to send out even more laborers. Fervently pray alongside us.*



## Gospel transformation



### HIGHLIGHTS

**32**  
new people groups  
and places engaged

**157,308**  
heard the gospel

**14,477**  
new believers

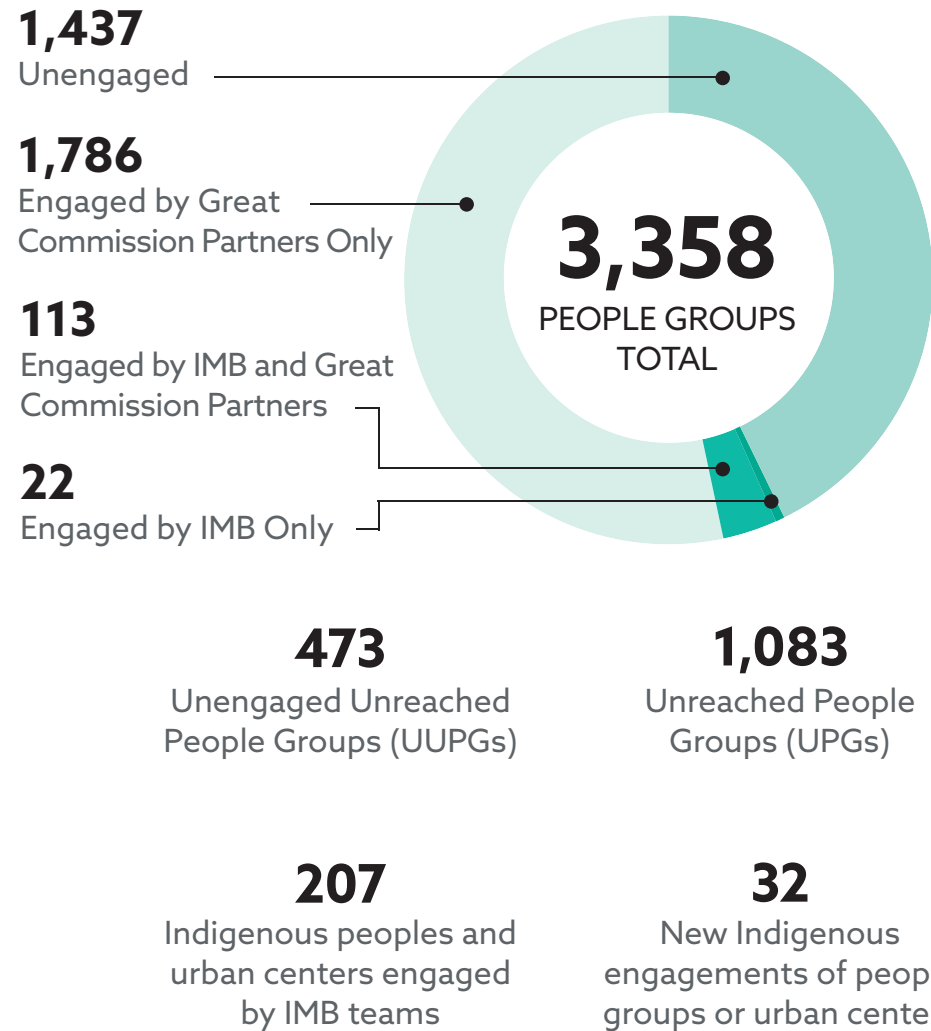
**9,318**  
baptisms

**1,521**  
new churches

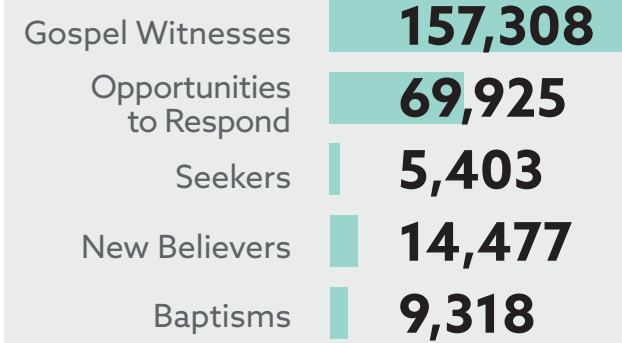
**21,205**  
people received  
leadership training

# Asian Pacific Rim Peoples

## ENTRY



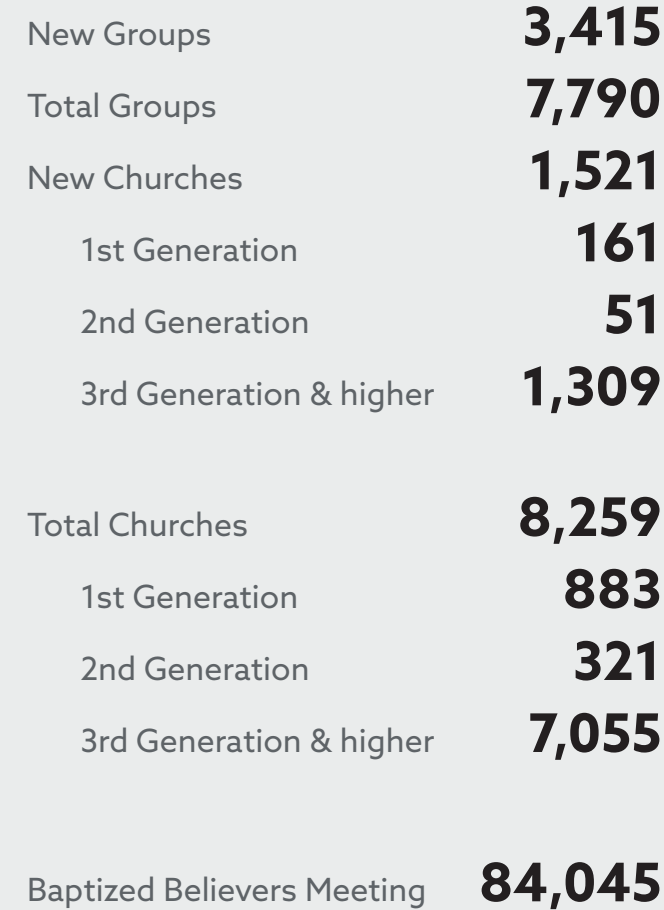
## EVANGELISM



## DISCIPLESHIP

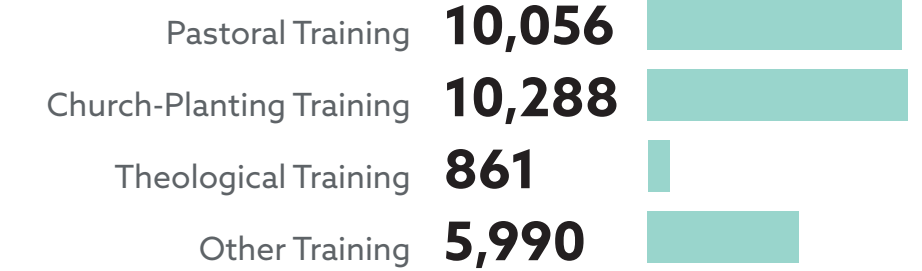


## HEALTHY CHURCH FORMATION



# Summaries

## LEADERSHIP DEVELOPMENT



## EXIT TO PARTNERSHIP

IMB engagement decreases as local ownership of the missionary task increases.



# Asian Pacific Rim Peoples

## ENTRY

*In order to meet unbelievers in our community, I helped women from my local church begin a mother's care ministry. We plan classes and events that equip mothers to care for their children and give them a space to share the joys and challenges of parenting. This ministry gives us a way to get to know many women who would probably not come to church on their own. As we build relationships with them, we have opportunities to share the gospel. We pray many will trust and believe in Jesus, and that their families will be transformed.*

## EVANGELISM

*Easter fell during Ramadan this year, a time when Muslims are often more open to spiritual conversation as they focus on spiritual things. We partnered with local believers in our city to plan an intentional and unique ministry outreach. We performed an Easter drama in the parking lot of a local church multiple times over Easter weekend, giving many in the community who would not feel comfortable entering a church building a chance to hear the gospel. The local Deaf population was invited as well, and sign language translation was provided. We also recorded and published the drama online. We pray the seeds of the gospel we sowed will bear much fruit.*



**46,470**  
**DYING DAILY**  
**WITHOUT CHRIST**

Population  
2,331,282,788

Approximate numbers calculated using IMB global population and evangelical Christian estimates.

# From Your Missionaries

## DISCIPLESHIP

*We realized that because refugees in our community were struggling to heal from pain in their past, it was challenging for them to truly move into the future. So, we began equipping local believers to lead Trauma Healing groups. As local believers better understand what the Bible says about suffering, they are prepared to share the gospel with refugees who are searching for hope. After over a year of running Trauma Healing camps, we have seen many people begin to heal, even some who were suicidal. We are working to train more believers to help in this ministry, and we pray God continues to use it to change lives.*

## HEALTHY CHURCH FORMATION

*When our family moved to a new city, our new house was just a short walk from the railroad tracks. We soon realized thousands of low-income migrant workers lived in makeshift homes on the tracks. For the next eight months, we built relationships with many of them and shared the gospel. Eventually, one couple came to faith, and afterwards several other families did as well. Now, a small church has formed, and we are discipling the believers. Together as a church, we are continuing to share the gospel with other families who live on the tracks and praying that more churches will be planted.*

## LEADERSHIP DEVELOPMENT

*Through a miraculous vision and the witness of local believers, a Muslim drug dealer and his wife put their faith in Christ several years ago. We, alongside national partners, faithfully disciplined and trained them, and they have become powerful evangelists. In the last year and a half, they have helped baptize approximately forty people and started six new Bible studies that we pray will grow into churches. We are amazed at the gospel transformation in this couple's life and pray God will use them greatly for His glory in our city.*

## EXIT TO PARTNERSHIP

*Decades of ministry among unreached tribes in the Philippines is bearing fruit in a powerful way. The Bugkalot tribe, once feared across the Philippines for their violent raids against enemy tribes, has become a powerful missionary force. After my husband and I trained and equipped the tribe's churches, they began sending their own missionaries to a neighboring unreached tribe. This year, they completed their first full year of providing formal Bible education classes to believers from this neighboring tribe, and they have a vision to continue partnering with believers across the Philippines to reach the remaining tribes who have yet to hear the gospel.*

# Central Asian Peoples

## FROM THE GLOBAL LEADER:

Jesus said to her, "I am the resurrection and the life. The one who believes in me, even if he dies, will live. Everyone who lives and believes in me will never die. Do you believe this?" "Yes, Lord," she told him, "I believe you are the Messiah, the Son of God, who comes into the world."

**John 11:25-27**

*There is a lot of chaos in Central Asia. But, chaos creates opportunities. I am grateful that the Southern Baptists' generous financial support and ongoing prayers allow us to continue sharing the Gospel in Central Asia despite the chaos. People are hearing and responding to the Gospel of Jesus, in part, because of your faithfulness. Thank you for sending us and holding the ropes!*



## Gospel transformation



## HIGHLIGHTS

**2**  
new people groups  
and places engaged

**47,776**  
heard the gospel

**2,379**  
new believers

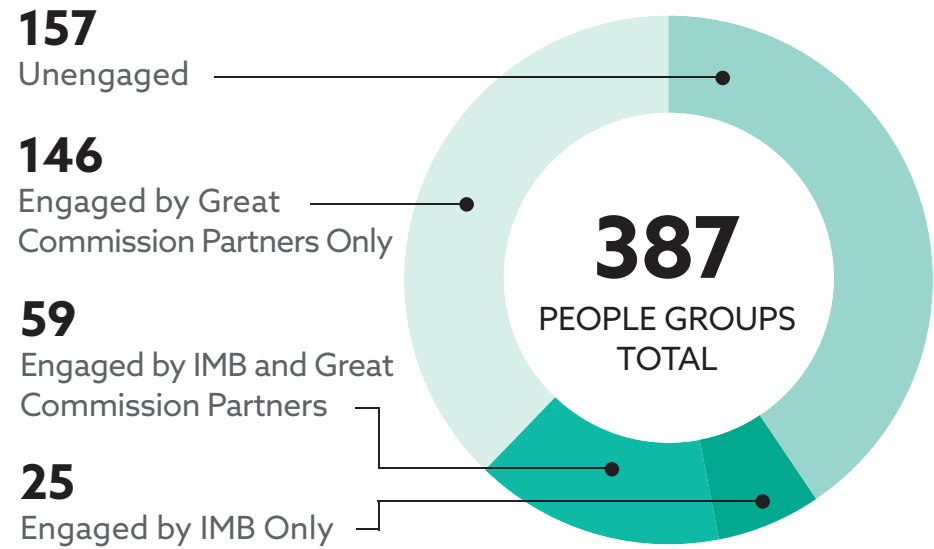
**659**  
baptisms

**31**  
new churches

**1,424**  
people received  
leadership training

# Central Asian Peoples

## ENTRY



**157**  
Unengaged Unreached People Groups (UUPGs)

**378**  
Unreached People Groups (UPGs)

**116**  
Indigenous peoples and urban centers engaged by IMB teams

**2**  
New Indigenous engagements of people groups or urban centers

## EVANGELISM

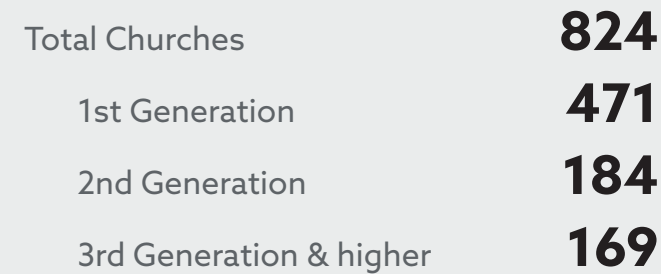
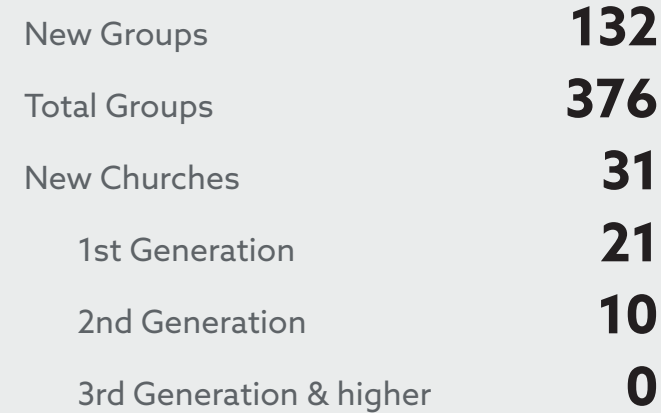


## DISCIPLESHIP

**6,545**  
Ongoing Bible Study participants

**652**  
Being personally mentored

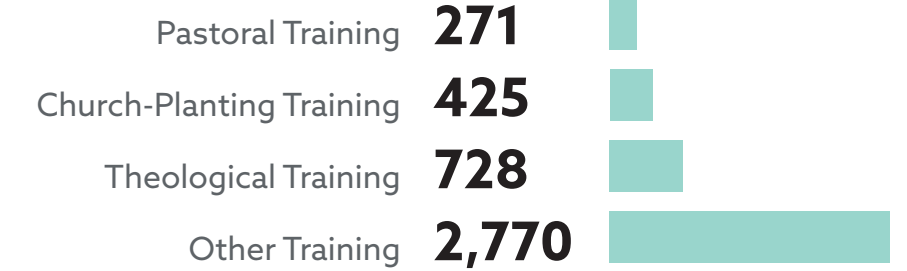
## HEALTHY CHURCH FORMATION



Baptized Believers Meeting **21,030**

# Summaries

## LEADERSHIP DEVELOPMENT



## EXIT TO PARTNERSHIP

IMB engagement decreases as local ownership of the missionary task increases.

**6**  
Total global missionary partners sent from one nation to another to join IMB teams  
(Total sent from 2020 until December 31, 2022)

**54**  
Indigenous people groups have self-sustaining ownership in the missionary task

**15**  
Indigenous people groups are engaging other people groups inside their own country

**8**  
Indigenous people groups are engaging other people groups outside their own country

# Central Asian Peoples

## ENTRY

*In August 2021, the world watched in horror as people fleeing the Taliban takeover in Afghanistan left in any way they could, even trying to hang on to departing airplanes. The peoples of Afghanistan are part of our Central Asia affinity group, and we saw God work in amazing ways to help our teams start or expand work with Afghan refugees in over 10 countries. Thousands of Afghans were housed, fed, and given trauma counseling by our teams using many volunteers and human needs funds from churches in the USA.*

## EVANGELISM

*In Central Asia, we were so encouraged by the money given by Southern Baptist churches for the Afghan refugee crisis. God used those gifts and prayers. As our teams fed and helped relocate Afghans, we naturally were able to share the Good News of salvation through Christ. Over the last year, our teams were able to share the gospel deeply with over 5,000 Afghans, and 572 became followers of Jesus.*

## DISCIPLESHIP

*Since many of our Central Asia field workers already had learned the heart language of the Afghan refugees, we and our ministry partners were able to start 25 discipleship groups for new Afghan believers over this last year. Many of the Afghans began to teach the Bible to their relatives.*

## HEALTHY CHURCH FORMATION

*Our teams have been planting healthy Iranian churches throughout Central Asia over the past 20 years. God used those mature Iranian believers to help start several new Afghan refugee churches this last year. In addition, Afghan believers we had been discipling for years were ready to start churches. Over the year, we saw 10 Afghan churches start. 268 Afghans were baptized.*

## LEADERSHIP DEVELOPMENT

*God used the terrible Afghanistan refugee crisis. We trained more Afghan Christians how to teach the Bible than in prior years. We expanded our fruitful Iranian pastor training program, and 29 Afghans joined these programs to learn how to teach the Bible with the goal of leading new churches. Iranians and Afghans speak a very similar language.*

## EXIT TO PARTNERSHIP

*Central Asia work is rather new, and most people groups were engaged within the last 20 years. However, our work with Iranians has been going on for 55 years. In one case this year, a mature Iranian leader moved to a European country and started 2 new Afghan churches with the American partners encouraging him from afar. Pray we see more of this exiting to partnership.*

# From Your Missionaries



**8,822**  
**DYING DAILY**  
**WITHOUT CHRIST**

Population  
383,081,882

Approximate numbers calculated using IMB global population and evangelical Christian estimates.

# Deaf Peoples

## FROM THE GLOBAL LEADER:

“The people living in darkness have seen a great light; on those living in the land of the shadow of death a light has dawned.”

**Matthew 4:16**

*In this past year, 2022, we have seen God display His love, grace, and power with incredible clarity among Deaf communities around the globe. Our Deaf Affinity personnel have reported dozens of new engagements, new believers, baptisms, new churches, and sign language Scripture translations begun. Our hearts are extremely grateful as we continue to see so many Deaf living in spiritual darkness coming to know the Light of the world and sharing His message among their own peoples.*



# Gospel transformation



## HIGHLIGHTS

**0**  
new people groups  
and places engaged

**2,261**  
heard the gospel

**122**  
new believers

**97**  
baptisms

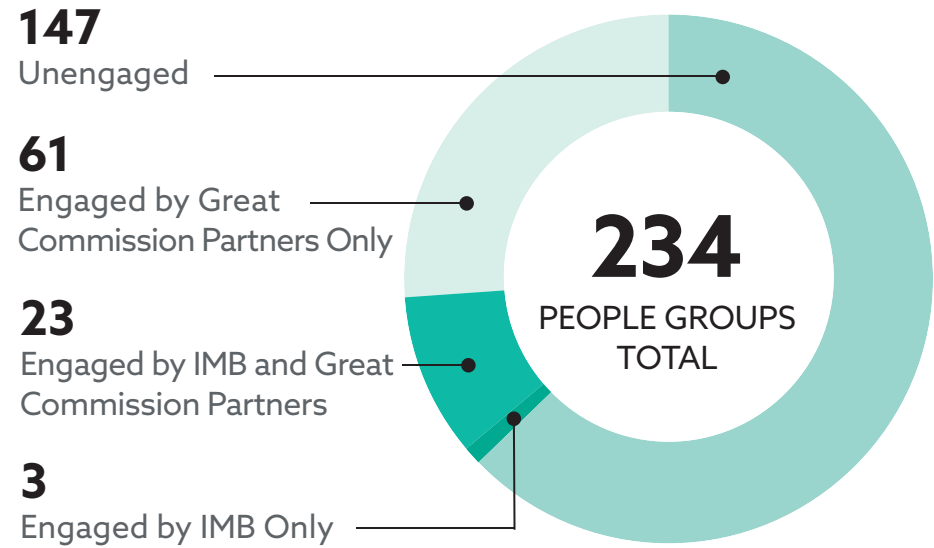
**14**  
new churches

**60**  
people received  
leadership training



# Deaf Peoples

## ENTRY



**147**  
Unengaged Unreached People Groups (UUPGs)

**232**  
Unreached People Groups (UPGs)

**26**  
Indigenous peoples and urban centers engaged by IMB teams

**0**  
New Indigenous engagements of people groups or urban centers

## EVANGELISM

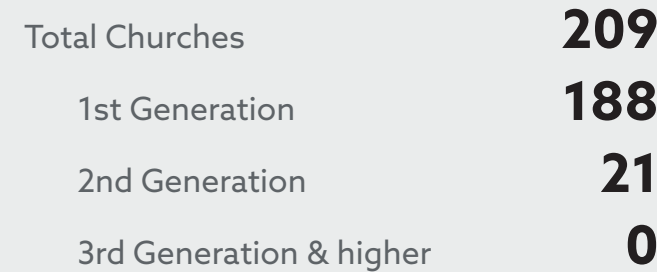


## DISCIPLESHIP

**1,219**  
Ongoing Bible Study participants

**68**  
Being personally mentored

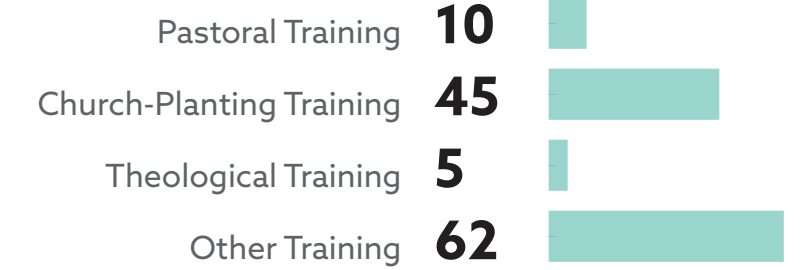
## HEALTHY CHURCH FORMATION



Baptized Believers Meeting **1,503**

# Summaries

## LEADERSHIP DEVELOPMENT



## EXIT TO PARTNERSHIP

IMB engagement decreases as local ownership of the missionary task increases.

**0**  
Total global missionary partners sent from one nation to another to join IMB teams  
(Total sent from 2020 until December 31, 2022)

**0**  
Indigenous people groups are engaging other people groups inside their own country

**32**  
Indigenous people groups have self-sustaining ownership in the missionary task

**7**  
Indigenous people groups are engaging other people groups outside their own country

# Deaf Peoples

## ENTRY

Sometimes entry into a new group is planned and sometimes it is not. Recently a young Deaf Affinity Journeyman needed transportation in Bangkok. She used the Thai version of Uber, and her scooter driver “happened” to be Deaf. In her recently learned Thai Sign Language, she conversed with the driver. When she asked about the Deaf there, he took her to a highway overpass to see about 40 Deaf people living in tents and huts. She and her team returned to share the Gospel among a Deaf community they would not have known about without God’s direction.

## EVANGELISM

Nearly 4 million Deaf people live in Central Asia but are difficult to access because of political and religious resistance to evangelical witness. In August, Deaf workers began a long-term effort to engage the Deaf in 9 countries. In one country our personnel have trained believers in Scripture translation and church planting, so a follow-up is planned to expand their vision to reach a people group of 6 million. They will also train Deaf refugees living in Central Asia to take the gospel message back into their homelands and begin Scripture translation projects.

## DISCIPLESHIP

In East Africa new believers face persecution for the first time. As new believers in local churches take a stand for Christ and are baptized, they are targeted by threats, abuse, and isolation from their families, a common thread for nearly every one of them. Leaders like KD and Emma work closely with IMB workers who encourage and guide them during challenging days of church growth. Opportunities continue in these countries, but everywhere Christ is not denied, believers face serious persecution as they share.

## HEALTHY CHURCH FORMATION

Oleh and Marianna are Deaf refugees who fled the war in Ukraine. They are working with IMB personnel and other Deaf national partners to start new congregations in two countries (70,000 Deaf and 20,000 Deaf respectively) — where there are no Deaf churches. Over Christmas they shared the Gospel with over 50 Deaf people in 2 cities in one country and over 40 in 2 cities in the other. With a genuine passion for church planting among the Deaf, they are now continuing to follow the call God gave them years ago.



**1,700**  
**DYING DAILY**  
**WITHOUT CHRIST**

Population  
73,775,015

Approximate numbers calculated using IMB global population and evangelical Christian estimates.

# From Your Missionaries

## LEADERSHIP DEVELOPMENT

In December IMB personnel met with Deaf leaders from around Central America to help plan a Scripture translation project and develop a strategy for church planting among the Deaf communities. A partner organization, Deaf Pathway Global, is assisting with the translation work while several Deaf Central Americans plan to engage, evangelize, and plant Deaf churches around the country. Diego came to faith several years ago with Deaf IMB workers. Now he is working with 2 other Deaf nationals, Isaac and Alan, to lead church-planting efforts.

## EXIT TO PARTNERSHIP

For over 10 years, Deaf national partners in East Asia have been working on Bible translation in a major sign language. In community testing, they share the translated Bible stories among lost Deaf people. The seeds of the Gospel are sown and people often follow Christ. This has become a pattern for these national partners. Since IMB workers have withdrawn, the partners communicate with our personnel while continuing Bible translation, evangelism, discipleship, and church planting. Barry, Paris, and Timothy (all Deaf) are long-term partners who have demonstrated hearts to see the Deaf of East Asia reached for Christ.

# European Peoples

## FROM THE GLOBAL LEADER:

“Behold, I am doing a new thing; now it springs forth, do you not perceive it? I will make a way in the wilderness and rivers in the desert.”

**Isaiah 43:19**

*The last several decades have seen significant decline among the church in Europe. But, there is bright light on the horizon as God is raising up new leaders who have a fresh zeal and passion to take the Gospel to the lost. These leaders are bold and believe that the Gospel is still the power of God unto salvation! Pray for these leaders to remain faithful in carrying out the missionary task. Also pray that they would raise up thousands of others who can labor to bring in a new harvest across the continent of Europe.*



# Gospel transformation

## HIGHLIGHTS

**5**  
new people groups  
and places engaged

**102,980**  
heard the gospel

**10,107**  
new believers

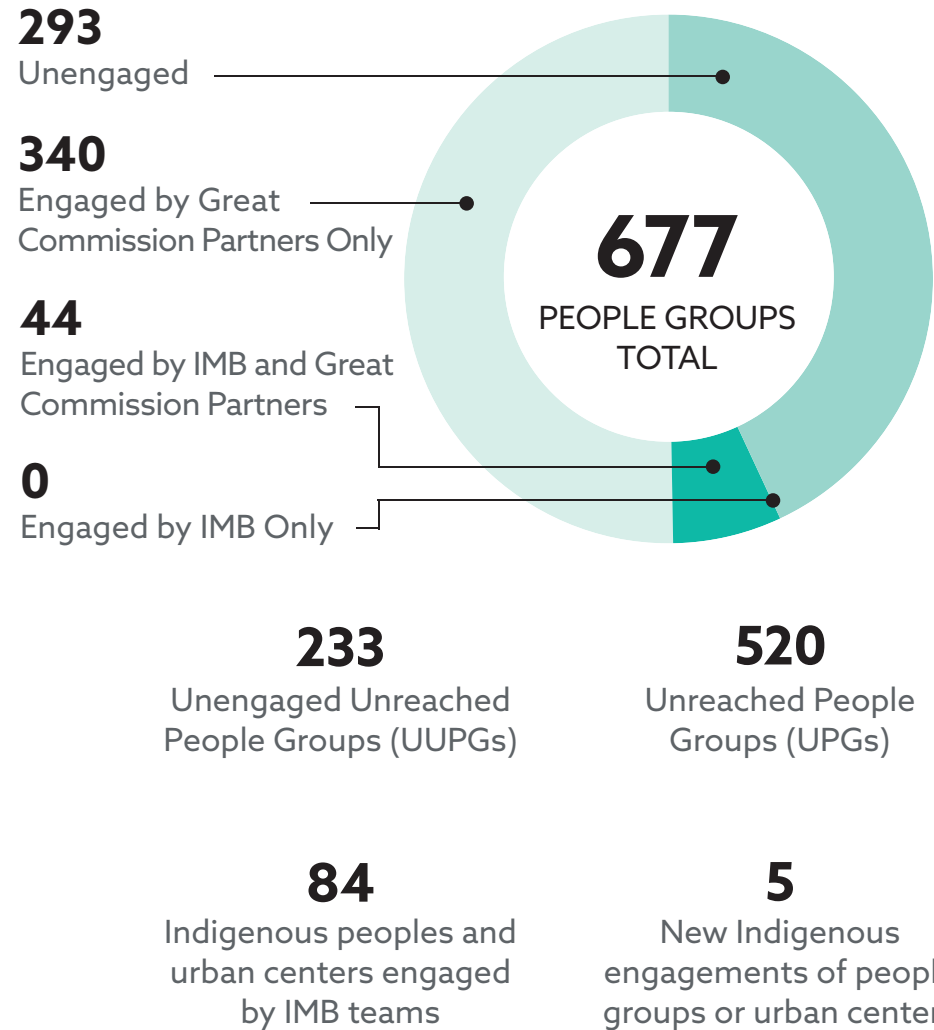
**508**  
baptisms

**42**  
new churches

**6,961**  
people received  
leadership training

# European Peoples

## ENTRY



## EVANGELISM

Gospel Witnesses	102,980
Opportunities to Respond	102,289
Seekers	10,107
New Believers	10,107
Baptisms	508

## DISCIPLESHIP

**8,397**  
Ongoing Bible Study participants

**0**  
Being personally mentored

## HEALTHY CHURCH FORMATION

New Groups	1
Total Groups	294
New Churches	42
1st Generation	40
2nd Generation	1
3rd Generation & higher	1

Total Churches	381
1st Generation	158
2nd Generation	47
3rd Generation & higher	10

Baptized Believers Meeting **7,656**

# Summaries

## LEADERSHIP DEVELOPMENT

Pastoral Training	0
Church-Planting Training	6,606
Theological Training	355
Other Training	0

## EXIT TO PARTNERSHIP

IMB engagement decreases as local ownership of the missionary task increases.

**4**  
Total global missionary partners sent from one nation to another to join IMB teams  
(Total sent from 2020 until December 31, 2022)

**16**  
Indigenous people groups are engaging other people groups inside their own country

**141**  
Indigenous people groups have self-sustaining ownership in the missionary task

**11**  
Indigenous people groups are engaging other people groups outside their own country

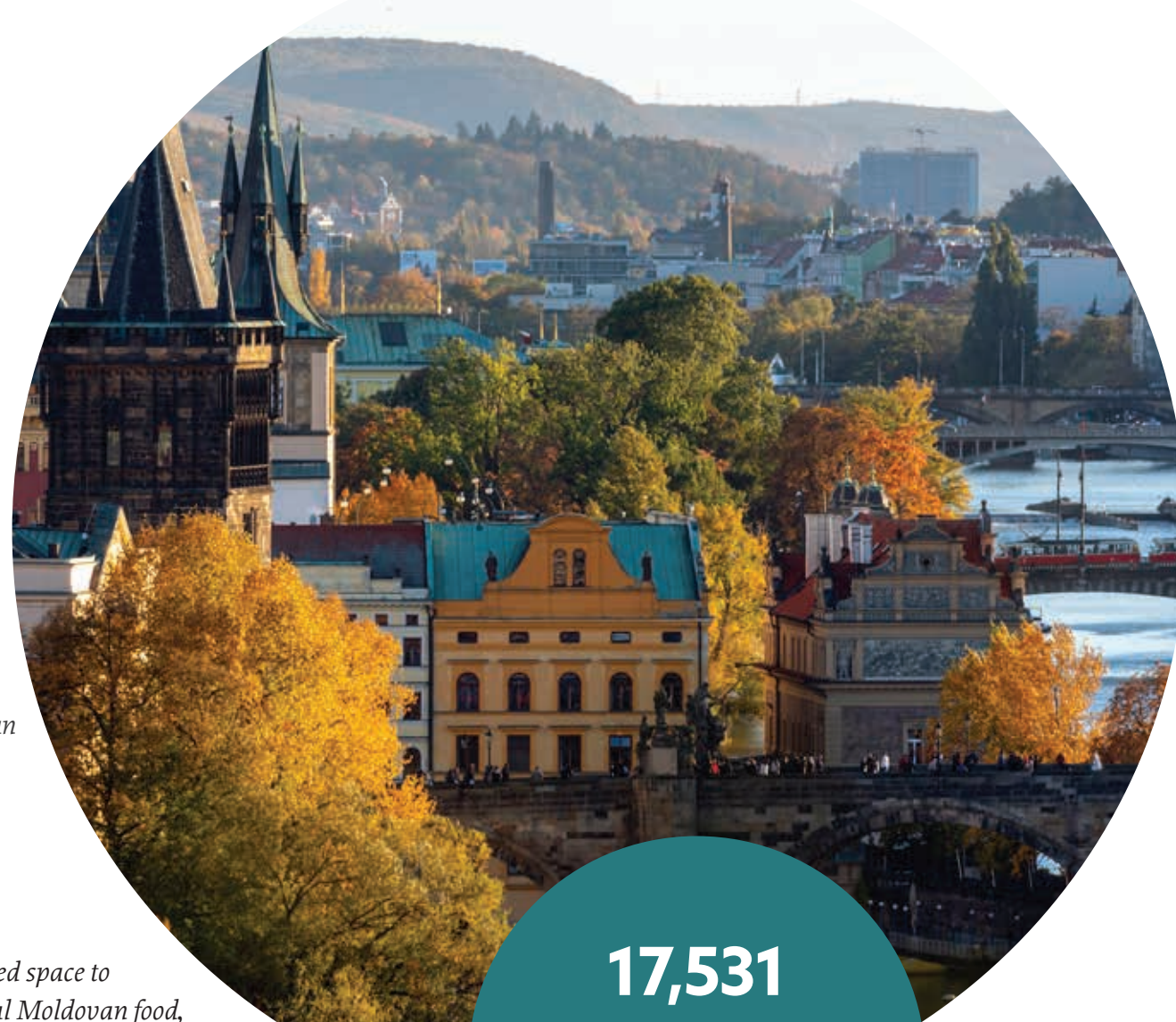
# European Peoples

## ENTRY

*For Ukrainians who remain in their homeland, their lifeline is a mobile device. It provides a connection to loved ones, pictures of destroyed homes, and news from local leaders. But what if it offered hope too? As hearts and buildings are broken, International Mission Board missionaries are providing a digital lifeline for Ukrainians. More than twenty million Ukrainians have seen a Facebook ad developed by missionaries and global partners. 1.4 million have viewed gospel presentations. The ads guide Ukrainians to a website that provides gospel resources, links to download a digital Bible and the ability to send a direct message to a Ukrainian or Russian-speaking Christian for help and prayer. Digital presence is impacting millions with the gospel!*

## EVANGELISM

*A pastor and children's home director in Moldova provided space to house refugees. Over a feast of freshly prepared traditional Moldovan food, he took time to talk to the refugees. Every refugee who passes through the children's home hears the gospel and many want to know more. The pastor said, "If they come today, and we know that tomorrow they will go, we will do our best, everything we can, to share the gospel, because we don't know if they will have another chance to hear the gospel."*



**17,531**  
**DYING DAILY**  
**WITHOUT CHRIST**

Population  
778,828,307

# From Your Missionaries

## DISCIPLESHIP

*In Latvia, a displaced missionary was able to quickly join a trauma support group for Ukrainian women. This group transitioned into a small group meeting in our home weekly. Several of the ladies are believers but some came from more nominal backgrounds and are not believers yet. It is exciting to see God working in their lives despite the extremely difficult circumstances they have gone through to get through the war.*

## HEALTHY CHURCH FORMATION

*In Romania, a new church plant began when a Ukrainian Christian struggled to understand and worship in English in an international church. The Ukrainian Christian approached the pastor and his wife about starting a Ukrainian service. A local Romanian church wanted to take on this group. The church established a service, and Ukrainian Christians are now worshipping in their heart language, and non-Christians have committed their lives to Christ as a result. They are meeting weekly for worship and have a small group for teens. Once a month they are trying to hold activities/events for children. They have the manpower to keep it going and have a vision to help the Ukrainians integrate into the local church if they desire.*

## LEADERSHIP DEVELOPMENT

*Over the past six months two families on the Western Ukraine Theological Education team have been helping to plant a church in Poland with seminary students at a Ukrainian Baptist seminary and led the Church Planting Program there. They were not running away from the war but preparing to serve Ukrainian refugees. They were the ideal people to do this since they know both Ukrainian and Polish languages and cultures well. Together with a group of refugees, they are planting a new Ukrainian church that is averaging over 40 in worship and has already held its first baptism.*

## EXIT TO PARTNERSHIP

*Leaving Ukraine was an unplanned exit, precipitated by invasion and violence. However, an IMB missionary discovered gospel access knows no geographic or social boundaries. She's now sharing the good news of Jesus with Ukrainian refugees in Romania. She and other Christians have access to share the gospel at a local Romanian school now home to roughly 125 Ukrainian refugees.*

Approximate numbers calculated using IMB global population and evangelical Christian estimates.

# Northern African & Middle Eastern Peoples

## FROM THE GLOBAL LEADER:

“I make it my ambition to preach the gospel, not where Christ has already been named, lest I build on someone else’s foundation, but as it is written, “Those who have never been told of him will see, and those who have never heard will understand.”

**Romans 15:20-21**

*Southern Baptists have greatly blessed us through faithful prayers, generous gifts, and strategic partnership with NAME this year. We have seen God’s grace poured out abundantly on us and our peoples. We have been able to preach the Gospel and see God move among those who had never heard before! We praise Him for what He has done and will continue to do in the days ahead as we all work together toward the vision of standing with NAME peoples around the throne one day (Rev. 7:9).*



## Gospel transformation



### HIGHLIGHTS

**9**  
new people groups  
and places engaged

**20,914**  
heard the gospel

**1,736**  
new believers

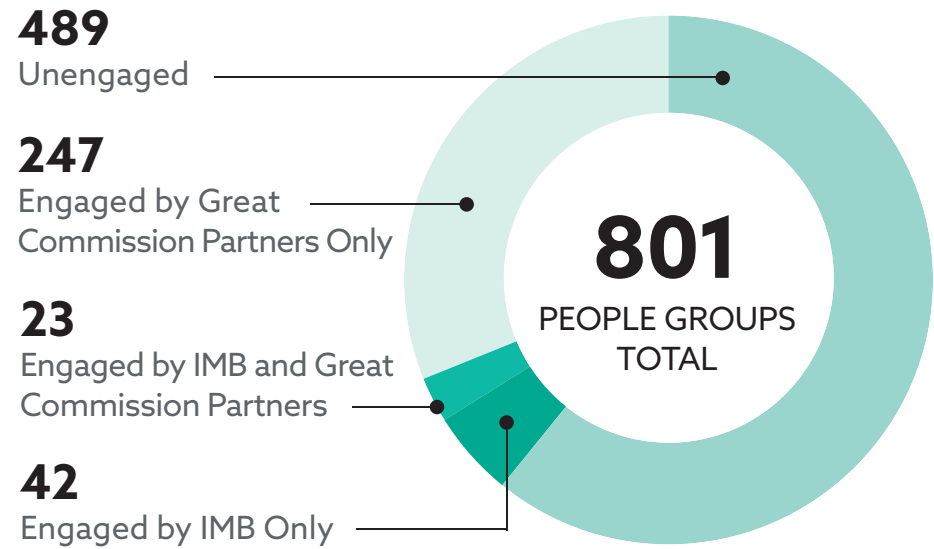
**362**  
baptisms

**87**  
new churches

**271**  
people received  
leadership training

# Northern African & Middle Eastern Peoples

## ENTRY



**465**  
Unengaged Unreached People Groups (UUPGs)

**740**  
Unreached People Groups (UPGs)

**89**  
Indigenous peoples and urban centers engaged by IMB teams

**9**  
New Indigenous engagements of people groups or urban centers

## EVANGELISM

Gospel Witnesses	<b>20,914</b>
Opportunities to Respond	<b>14,884</b>
Seekers	<b>1,732</b>
New Believers	<b>1,736</b>
Baptisms	<b>362</b>

## DISCIPLESHIP

**1,248**  
Ongoing Bible Study participants

**244**  
Being personally mentored

## HEALTHY CHURCH FORMATION

New Groups	<b>120</b>
Total Groups	<b>294</b>
New Churches	<b>87</b>
1st Generation	<b>87</b>
2nd Generation	<b>0</b>
3rd Generation & higher	<b>0</b>

Total Churches	<b>412</b>
1st Generation	<b>277</b>
2nd Generation	<b>54</b>
3rd Generation & higher	<b>81</b>

Baptized Believers Meeting **3,023**

## LEADERSHIP DEVELOPMENT

Pastoral Training	<b>50</b>
Church-Planting Training	<b>106</b>
Theological Training	<b>115</b>
Other Training	<b>61</b>

## EXIT TO PARTNERSHIP

IMB engagement decreases as local ownership of the missionary task increases.

**0**  
Total global missionary partners sent from one nation to another to join IMB teams  
(Total sent from 2020 until December 31, 2022)

**9**  
Indigenous people groups are engaging other people groups inside their own country

**35**  
Indigenous people groups have self-sustaining ownership in the missionary task

**3**  
Indigenous people groups are engaging other people groups outside their own country

# Summaries

# Northern African & Middle Eastern Peoples

## ENTRY

*A wrongly incarcerated national believer dreamed of a prison ministry. After his release, he and his co-workers were allowed to help at a prison in a neighboring area. The faithfulness of the team of nationals to visit and meet the needs of the prisoners and the prison has created a miraculous friendship. The team has been able to bring in a ministry soccer team to serve the prisoners as well as local churches to do follow up care. Finding a neglected community and demonstrating God's love (Romans 5:8) has led to many open doors for the gospel.*

## EVANGELISM

*My wife and I encountered a married couple from the Middle East in view of the beautiful Swiss Alps. They were on vacation. We were about to share the good news. A quick trip to a nearby gelato shop and we all found ourselves deep in conversation. The time they had was short, but for the first time in their lives they had access to the Gospel as we shared.*

## DISCIPLESHIP

*In Matthew 28:18-20, we are commanded to make disciples of all people groups as we are going. The pastor of a church in a growing network has sent out more than one hundred national church members throughout the country to live with and engage unreached people groups for the Kingdom. Our team is partnering with them and a team of national partners to sharpen one another through trainings and discipling relationships.*

## HEALTHY CHURCH FORMATION

*As I met with refugee believers for weekly Bible study, we came to Acts 2:36-47. As we studied God's Word, they began to discover what the true essence of church was: fellowship, prayer, biblical teaching, the ordinances and more. The group began to realize they could be a church! They began to dream of what an Arabic speaking church might look like in their neighborhood. They began to pray for God to send someone who met the Biblical qualifications to pastor the group and God provided a candidate who has been faithfully serving in a partnering church on the other side of the city.*

## LEADERSHIP DEVELOPMENT

*Two sisters from our small church who were baptized within the last year had been sharing with their family, and we made it a goal to visit their family's apartment at least monthly, as it is almost an hour away on the edge of town and it is difficult for them to come to us. We had planned to pick them up, and worship together outside, but after eating a meal together, they asked if we could meet with the rest of their family. I quickly arranged with the young man we've been training as a leader to adapt the lesson. After hearing the message, two more sisters said they believed!*

## EXIT TO PARTNERSHIP

*My wife and I, along with our infant daughters, arrived in a small market town hidden in the mountains of North Africa where there were no known believers. We shared the gospel at every available opportunity in villages where it had never been heard, and through fifteen years of incredible highs and devastating lows, the Lord has brought to himself a faithful group of believers who love Jesus, love meeting together, and want to reach the rest of their people group. As they continue to grow, we get to see them function more and more as a church on their own.*

# From Your Missionaries



**13,863**  
**DYING DAILY**  
**WITHOUT CHRIST**

Population  
609,574,260

Approximate numbers calculated using IMB global population and evangelical Christian estimates.



# South Asian Peoples

## FROM THE GLOBAL LEADER:

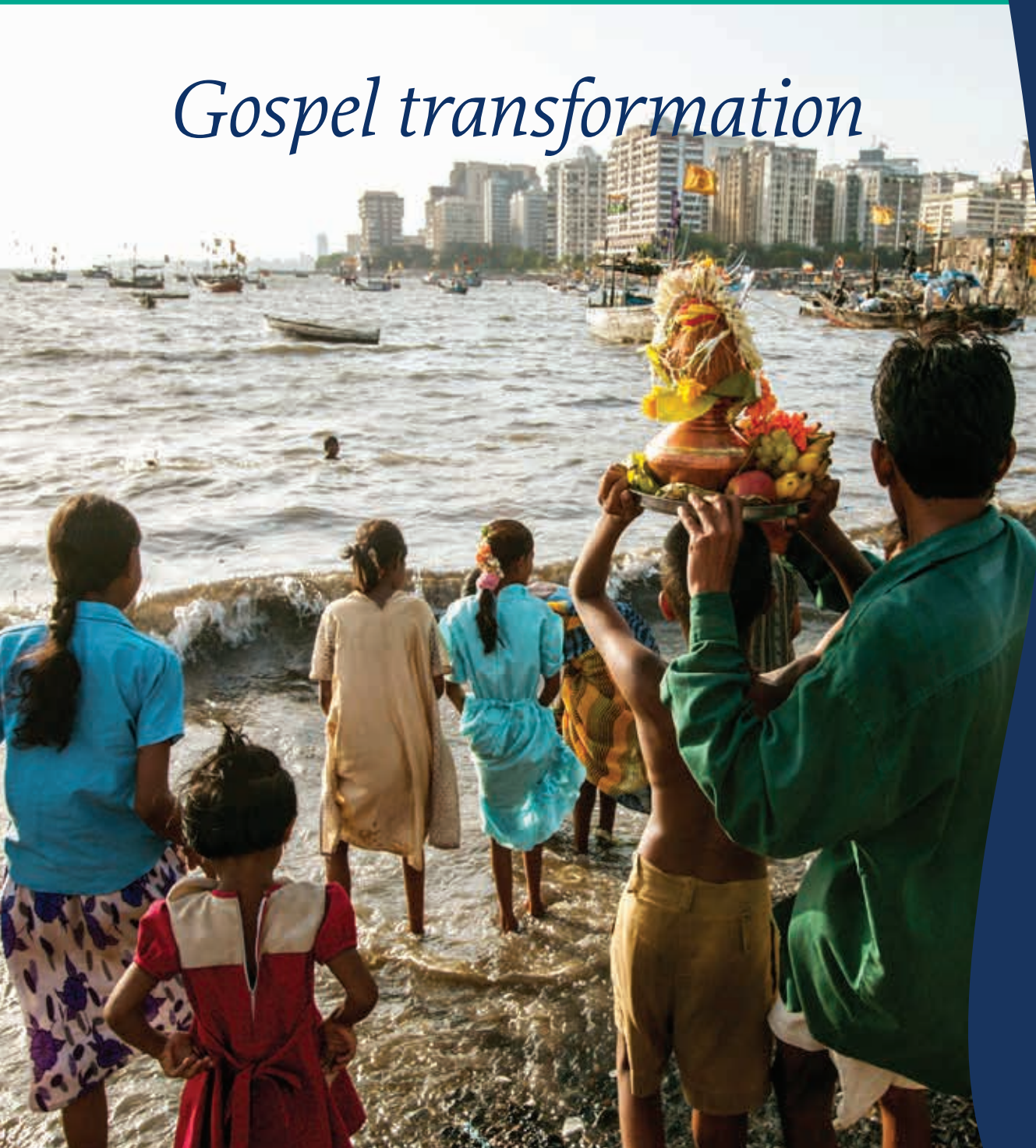
“Then he said to his disciples, ‘The harvest is plentiful, but the laborers are few; therefore pray earnestly to the Lord of the harvest to send out laborers into his harvest.’”

**Matthew 9:37-38**

*This is indeed a season of harvest in South Asia. The Lord of the harvest has chosen many to enter the kingdom. For IMB personnel these days elicit both celebration and diligence. We believe the components of the missionary task provide a menu of stewardship as we assess the state of the church among our targets for mission. Laborers for both sowing and reaping are welcome! Pray that IMB workers would rightly steward time and talents to push the South Asian church further to maturity and health in the midst of harvest.*



## Gospel transformation



### HIGHLIGHTS

**1**  
new people groups  
and places engaged

**229,399**  
heard the gospel

**115,317**  
new believers

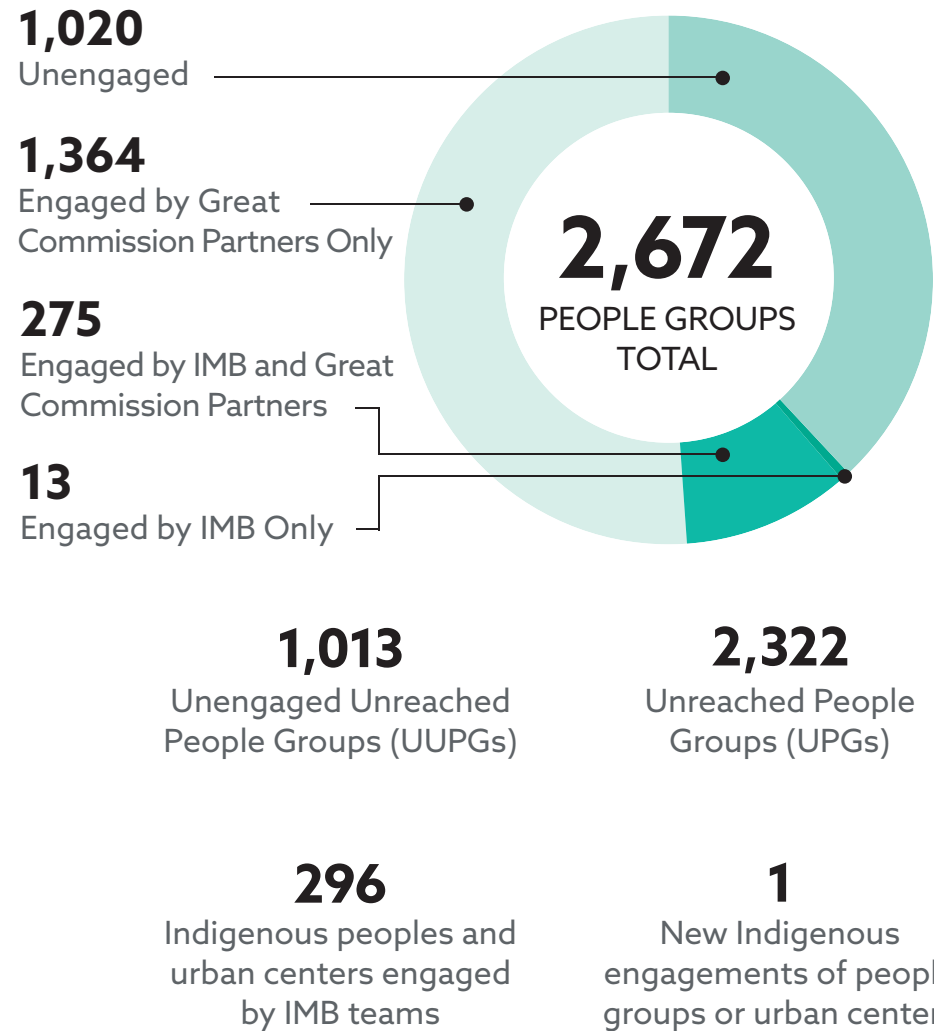
**84,135**  
baptisms

**19,244**  
new churches

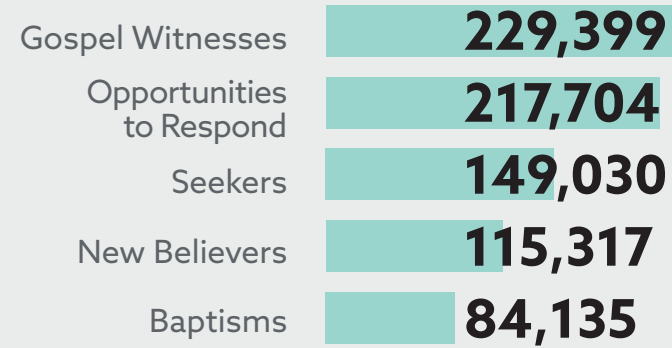
**109,473**  
people received  
leadership training

# South Asian Peoples

## ENTRY



## EVANGELISM

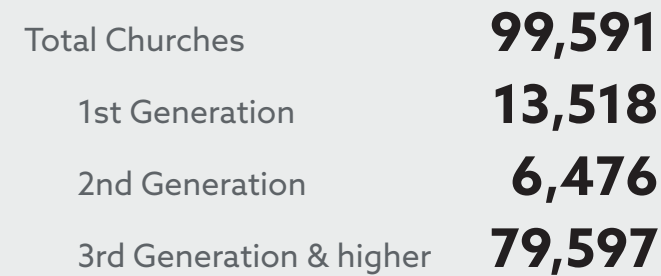
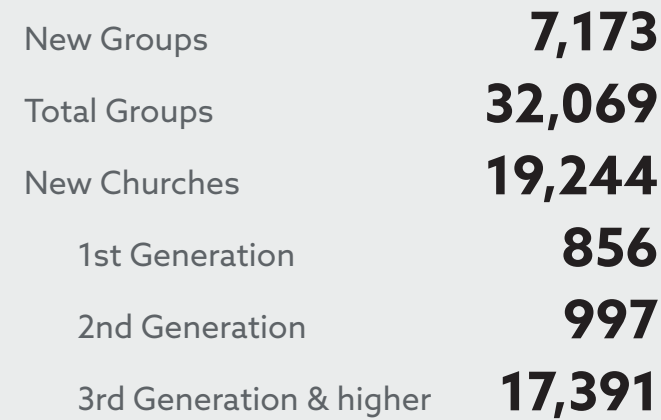


## DISCIPLESHIP

**253,237**  
Ongoing Bible Study participants

**124,676**  
Being personally mentored

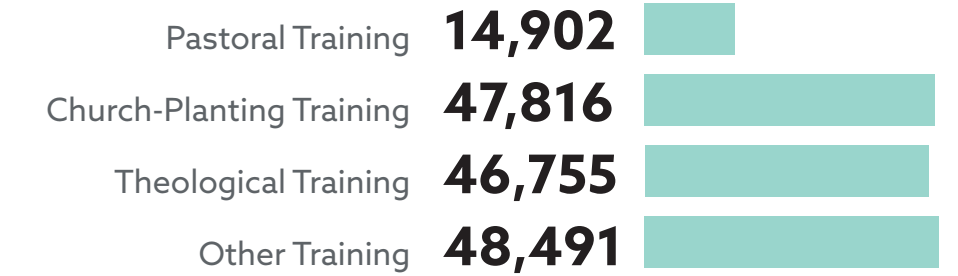
## HEALTHY CHURCH FORMATION



Baptized Believers Meeting **402,119**

# Summaries

## LEADERSHIP DEVELOPMENT



## EXIT TO PARTNERSHIP

IMB engagement decreases as local ownership of the missionary task increases.

**0**  
Total global missionary partners sent from one nation to another to join IMB teams  
(Total sent from 2020 until December 31, 2022)

**2**  
Indigenous people groups are engaging other people groups inside their own country

**23**  
Indigenous people groups have self-sustaining ownership in the missionary task

**0**  
Indigenous people groups are engaging other people groups outside their own country

# South Asian Peoples

## ENTRY

*In 2016, our team began an initiative of entering lesser-reached fields to share the gospel. We spent Wednesdays walking from village to village meeting people and sharing the good news. In 2019, after three years of labor, our team shifted cities. We felt discouraged by the lack of response to the gospel and seeming lack of strategic alignment with our local partner, Chand, who stayed behind. Earlier this year, Chand came to visit our new city. He shared how the Lord had been faithfully working in his region. Today, churches are meeting in 6 of the villages we had all entered together years ago.*

## EVANGELISM

*Rajesh planned to commit suicide at his wife's request because during their entire 20-year marriage he was unfaithful and an alcoholic. His young brother, Ashok, was the first known believer from their people group. Ashok had been an alcoholic before following Christ in 2019, so when Rajesh revealed his plans, Ashok shared the gospel and his testimony of being saved from his sins and his addiction. Rajesh repented and turned to Christ. Jesus saved him and transformed his life. He was baptized and now shares his testimony with all who will listen! Through these brothers' witness, many have come to faith in Christ.*

## DISCIPLESHIP

*The first time we went to their house church Shelend and Sheetal told us they needed to grow as disciples and disciple makers, but they didn't have a plan. We began modeling a "Three Thirds" meeting for them—a format where we talk about what God has done since last week, learn something new from God's Word, and set goals for obeying His Word in the coming week. Through this format, we taught our gospel story set and discipleship lessons. We've seen church members share with others, connect with UUPGs we've prayed over, and develop better rhythms for abiding. We've been encouraged by their enthusiasm and the fruit that has come from their obedience to the Lord as they abide.*

## HEALTHY CHURCH FORMATION

*About eight years ago I began discipling and partnering with Vinod and his son, Ashray. Vinod is a simple farmer who had been trained in Hindu priestly duties. Ashray was only 11 years old when our relationship began, but he joined his father and learned quickly. Together we have used a discipleship training package to enter new fields, share the gospel, and disciple new believers. This has led to healthy church formation in many places. Since we began, Vinod has planted around 300 churches which he has passed off to local leaders that he and Ashray have helped train.*



**42,911**  
**DYING DAILY**  
**WITHOUT CHRIST**

Population  
1,911,252,367

Approximate numbers calculated using IMB global population and evangelical Christian estimates.

# From Your Missionaries

## LEADERSHIP DEVELOPMENT

*Ranjit has taken ownership of the strategy for a district this year. He created a strategy plan and did research on the district and the history of the work. Then he approached existing churches to cast vision for multiplication and seeing unengaged areas reached with the gospel. Eventually, he found two faithful brothers whom he has been investing in, training, and then going with into the villages sharing the gospel. At the beginning of the year there were only 19 known churches in the entire district, but six churches have already been added! Praise God for Ranjit's faithfulness to take ownership of taking the gospel to this district.*

## EXIT TO PARTNERSHIP

*The area where God has called us to serve is known more for its massive UPG than for UUPGs, but finishing the task is still an important vision for the local church to own. In 2021, several groups met to discuss engaging one of the last remaining UUPGs in the area. It became apparent to all that this UUPG had already been engaged on multiple fronts. Now we are seeing strategic involvement by leaders from within this UUPG networking with other groups for gospel advance among their people. It is amazing to see the Lord use faithful brothers and sisters united in vision and purpose, partnering to engage the lost.*

# Sub-Saharan African Peoples

## FROM THE GLOBAL LEADER:

“I am in them and You are in Me. May they be made completely one, so the world may know You have sent me and have loved them as You have loved Me.”

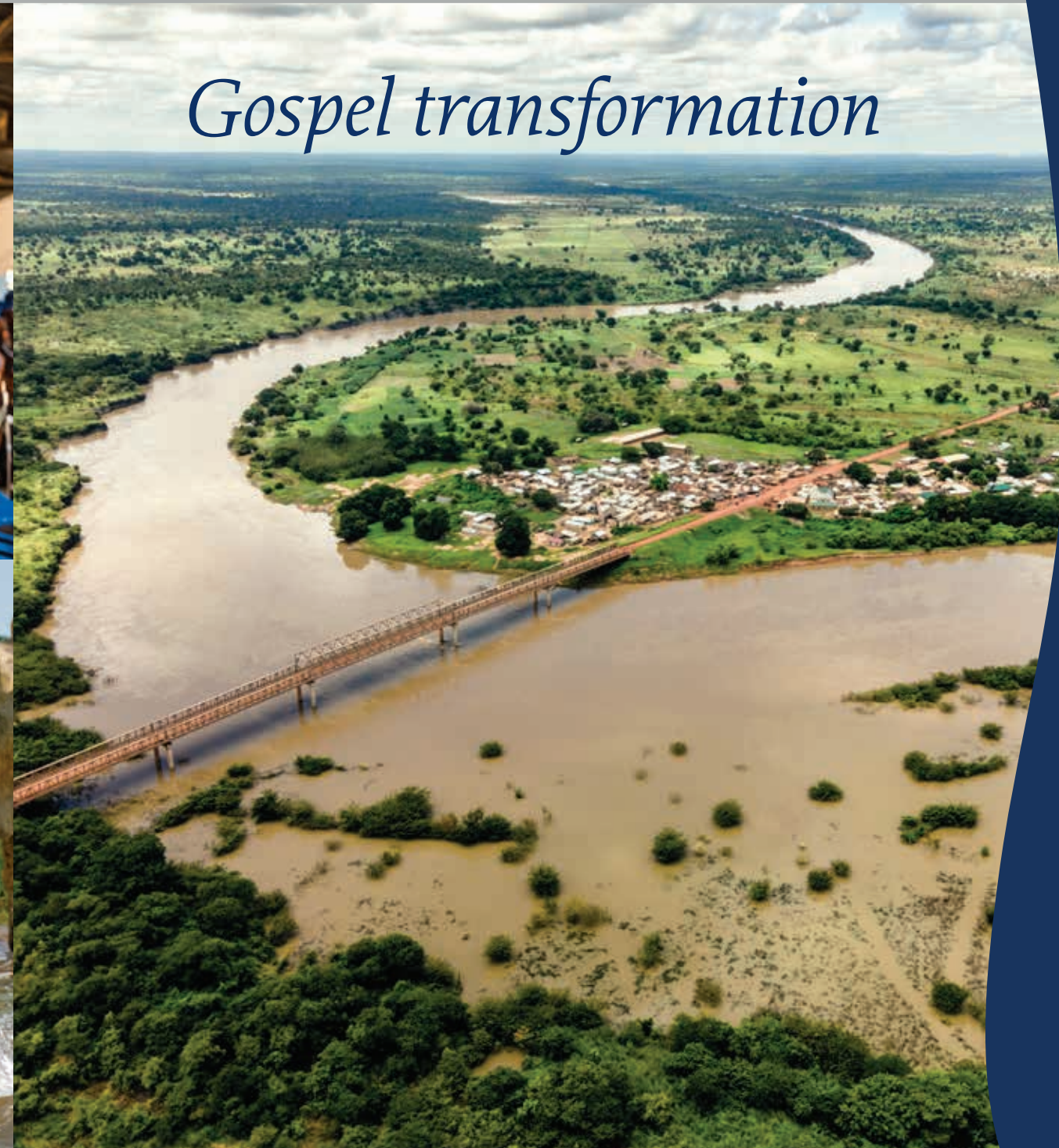
**John 17:23**

*The church in Sub-Saharan Africa is embracing the Rev. 7:9 vision and the training needed to send out and support African missionaries to the ends of the earth. Healthy church trainings, pastor and missionary trainings, and other leadership development strategies are building toward a powerful vision for the African church to pray, give, go, and send African believers across this continent and beyond. Even so, lostness across Africa continues to grow. There remains a desperate need for missionary presence in some of the most difficult to reach places, chaotic urban centers, and among the growing refugee population.*

*Please pray for healthy African churches to send African believers to the unreached of Africa and beyond.*



## Gospel transformation



### HIGHLIGHTS

**3**  
new people groups  
and places engaged

**83,942**  
heard the gospel

**24,610**  
new believers

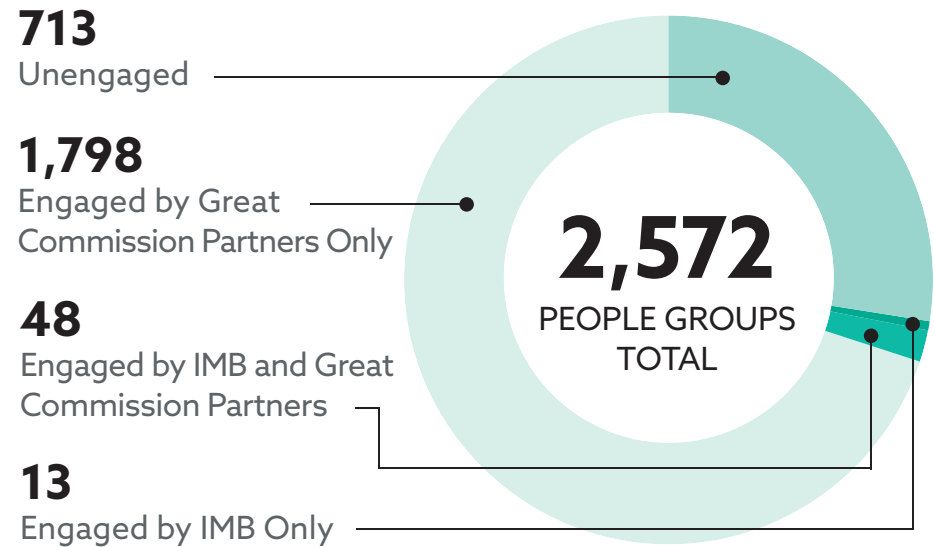
**6,488**  
baptisms

**268**  
new churches

**4,184**  
people received  
leadership training

# Sub-Saharan African Peoples

## ENTRY



**466**  
Unengaged Unreached  
People Groups (UUPGs)

**1,577**  
Unreached People  
Groups (UPGs)

**87**  
Indigenous peoples and  
urban centers engaged  
by IMB teams

**3**  
New Indigenous  
engagements of people  
groups or urban centers

## EVANGELISM

Gospel Witnesses	<b>83,942</b>
Opportunities to Respond	<b>73,206</b>
Seekers	<b>18,181</b>
New Believers	<b>24,610</b>
Baptisms	<b>6,488</b>

## DISCIPLESHIP

**25,048**  
Ongoing Bible Study  
participants

**1,953**  
Being personally  
mentored

## HEALTHY CHURCH FORMATION

New Groups	<b>149</b>
Total Groups	<b>325</b>
New Churches	<b>268</b>
1st Generation	<b>234</b>
2nd Generation	<b>28</b>
3rd Generation & higher	<b>6</b>

Total Churches	<b>2,227</b>
1st Generation	<b>1,733</b>
2nd Generation	<b>283</b>
3rd Generation & higher	<b>211</b>

Baptized Believers Meeting **158,805**

## LEADERSHIP DEVELOPMENT

Pastoral Training	<b>1,621</b>
Church-Planting Training	<b>1,517</b>
Theological Training	<b>1,046</b>
Other Training	<b>2,820</b>

## EXIT TO PARTNERSHIP

IMB engagement decreases as local ownership of the missionary task increases.

**2**  
Total global missionary  
partners sent from one nation  
to another to join IMB teams  
(Total sent from 2020 until December 31, 2022)

**15**  
Indigenous people groups are  
engaging other people groups  
inside their own country

**101**  
Indigenous people groups  
have self-sustaining ownership  
in the missionary task

**3**  
Indigenous people groups are  
engaging other people groups  
outside their own country

# Summaries

# Sub-Saharan African Peoples

## ENTRY

*Forced to flee their town along with hundreds of thousands of others as insurgents moved in, one family started a community center in their new hometown. Now Muslim Background Believers from their new hometown are reaching out to those who have been internally displaced by the conflict as they pray about how God wants them to reach their province for Christ.*

## EVANGELISM

*A year ago, our team trained a group of local Baptist partners in the Missionary Task and this resulted in a Bible study starting among Sierra Leonean migrants in an unreached neighborhood of Dakar. In the past year, they have seen three Muslims come to faith, two of whom have been baptized.*

**22,121**  
**DYING DAILY**  
**WITHOUT CHRIST**

Population  
988,776,478



# From Your Missionaries

## DISCIPLESHIP

*Recently 42 Tanzanian men and women put feet to the Great Commission. They fanned out through the city center of Dar es Salaam where they encountered Muslims, Hindus, non-Christians, and believers! As a result, the gospel was shared with well over 100 people. Praise God for those who believed and committed their lives to Christ! From this number, at least seven have already submitted to believer's baptism, with more waiting. We thank the Lord for two new house churches that are now meeting in response to the Great Commission. Please pray for our team as we now engage in follow-up and training.*

## HEALTHY CHURCH FORMATION

*Celebrate with the Welcome Center Church meeting in the inner city of Durban, South Africa. Weekly, refugees from various countries gather for worship. The church is a refuge from the daily struggle for survival - a place to celebrate God and be family. This past Sunday, two new believers were baptized into the fellowship of the Welcome Center as they celebrated their first anniversary. The ocean served as the baptistry.*

Approximate numbers calculated using IMB global population and evangelical Christian estimates.

## LEADERSHIP DEVELOPMENT

*For pastoral training, we are working with the house churches in Tambacounda and Velingara area (of West Africa) to offer training for their leaders. We've conducted two sessions so far covering an overview of the New and Old Testaments, methods of Bible study, evangelism in the world and in your community. The next session will be this fall.*

## EXIT TO PARTNERSHIP

*A strategic agreement was made between IMB missionaries and Kenyan Baptists to partner toward developing healthy church leaders, which includes pastors, missionaries, and theological educators. This partnership will help shape the health of future church leaders, and we pray God will use it to shape the future of the church in this part of Africa.*

## How is the data collected?

IMB Team leaders regularly enter their own personal efforts and the efforts of frontline team members and close baptistic partners, as well as any resulting fruit from the Lord, into IMB proprietary software that tracks and maintains all this data. Both the “faithfulness” data and the resulting “fruitfulness” data are entered on a people group basis. In addition, paper forms and other proprietary software that track precise locations of groups and churches, as well as their alignment with the 12 characteristics of a church defined in IMB’s Foundations document, are used by IMB teams, facilitating thorough assessment and confirmation of the data that is received.

Throughout the year and particularly before the Annual Statistical Report is finalized, field-based researchers and liaisons from IMB’s Global Research Department use computer software to look for any anomalies or incorrectly entered data and thoroughly review all field reports for completeness and veracity prior to submitting the report.

## READING THIS REPORT

Readers should be careful not to make assumptions when reading IMB’s annual statistical report nor to compare it year-to-year. For security reasons, the total number of personnel and close partners in each part of the world who provide data for this report is not publicly released. This means it will always be unclear how many individual report givers contributed to an affinity’s numbers. In some missionary fields, our teams have many close partners, while other fields have few or no believers, let alone partners, to share in the work. This means that in some places providing opportunity to hear the gospel is the work of one or two individuals, and in other places, it can be thousands.

Also, in each affinity, no reference to the amount of time spent laboring among a particular people group or place is given. Some teams labor faithfully for a decade to see a single person come to saving faith in Jesus Christ. Other teams see multiple people decide to follow Christ in their first year. Some teams can stay in countries for years discipling pastors and leaders. Others are forced to leave after a short time by hostile governments, persecution, or health issues. Some teams see

fruit in terms of local churches’ ownership in the Great Commission and well-disciplined pastors and leaders such that they transition to a peer relationship with local leaders and stop reporting those partners’ efforts, shifting their team’s focus to new Unreached People Groups that are resistant to the gospel. One year a team may show a multitude of gospel shares and churches and the next year minimal gospel sharing and no churches. All of this means that year-by-year comparisons of “faithfulness” and resulting “fruitfulness,” even within the same affinity, should be avoided, as the circumstances behind any changes are varied and complex.

IMB personnel and partners, regardless of the difficulty of the soil, are laboring diligently and with their best efforts, trusting God with the results and striving to provide transparent, accurate, and trustworthy reporting. These field and personnel realities point to the desperate need for prayer.

**Pray for the lost, pray for our personnel and their partners, pray for access and open hearts to the gospel, and pray for local churches to be formed. To learn more visit [imb.org/pray](http://imb.org/pray).**



## TERMS USED

**Affinity:** Affinities are strategic combinations of all the world’s people groups, which help facilitate the spread of the gospel based on shared culture, root languages, ethnicities, and other similar factors. IMB has found that having teams focus on these affinity groupings allows for more focused effort on similar peoples regardless of where they live.

**Great Commission Christian Partners:** A Great Commission Christian (GCC) is a term used to designate partners, both international and domestic, who work for the fulfillment of the Great Commission and share evangelical alignment with the SBC.

**Global Missionary Partner:** A global missionary partner (GMP) is a national partner follower of Jesus, called by God to be a cross-cultural missionary, assessed and sent by their local church and sending entity, affirmed by IMB field personnel, and working in cooperation with an IMB field team.

**New Churches:** Any new church included in the Annual Statistical Report signals that a group of baptized believers has matured and been disciplined to meet the

SBC definition of a church. We report new churches during the year when they meet the minimum baseline for being called a church; the church was not necessarily planted in that year but may have started as a group years earlier. We follow the definition of church given in the Baptist Faith and Message 2000, specifically the first paragraph referring to the local church.

**First, Second, and Third Generation Churches:** The term Generation explains the relationship between a parent church and any churches they plant, and later as those church plants become healthy and plant churches of their own – even to the 6th generation and beyond! IMB currently reports all churches in the 3rd or greater generation under the single heading “3rd Generation,” which can be a very large number.

**“Faithfulness” Data:** “Faithfulness” data is data collected about those missionary activities that are the responsibility of our personnel and their partners. These activities include sharing the gospel, discipling believers, training pastors

and leaders, as well as identifying and engaging people groups. IMB collects this data from our field personnel and partners so that we can hold one another accountable to be faithful to the tasks God has assigned to every follower of Christ.

**“Fruitfulness” Data:** “Fruitfulness” data is data collected about what God is doing among the peoples and places of the earth through the “Faithfulness” activities of IMB personnel and their partners but is ultimately out of their control. “Fruitfulness” data includes results such as an individual receiving salvation through Jesus Christ and the forming of new local churches. All followers of Christ have a responsibility to be obedient and faithful to the commands found in Scripture, but fruitful outcomes resulting from a believer’s obedience are caused by God. IMB collects this data so that we can glorify God by boasting in what the Lord is doing through our personnel and partners.



# INTERNATIONAL MISSION BOARD

For a digital  
format or more  
information visit  
[imb.org/asr](http://imb.org/asr).



3806 MONUMENT AVE  
RICHMOND, VA 23230  
800.999.3113  
[INFO@IMB.ORG](mailto:INFO@IMB.ORG)



*Some names may have been changed for security reasons.*